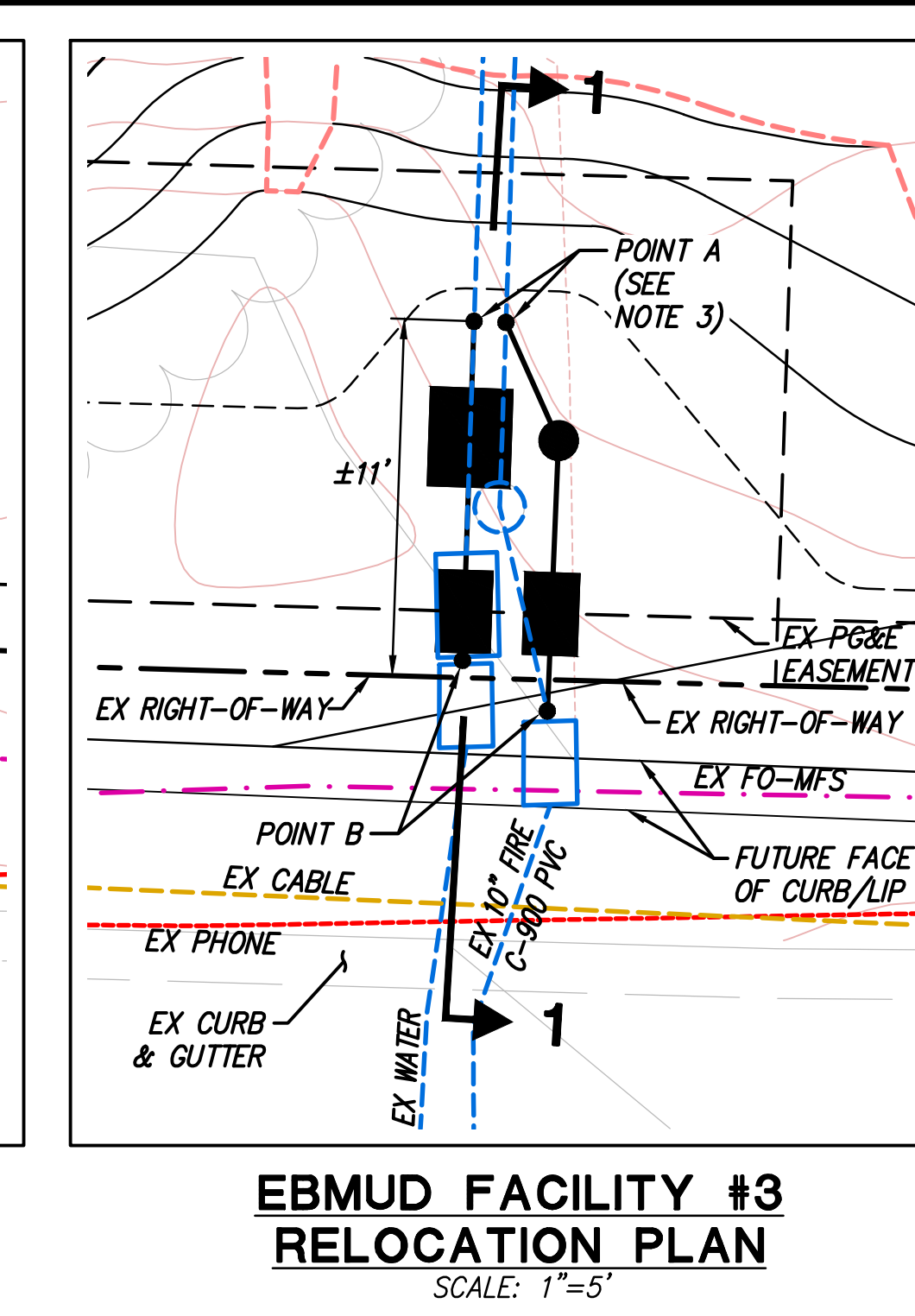
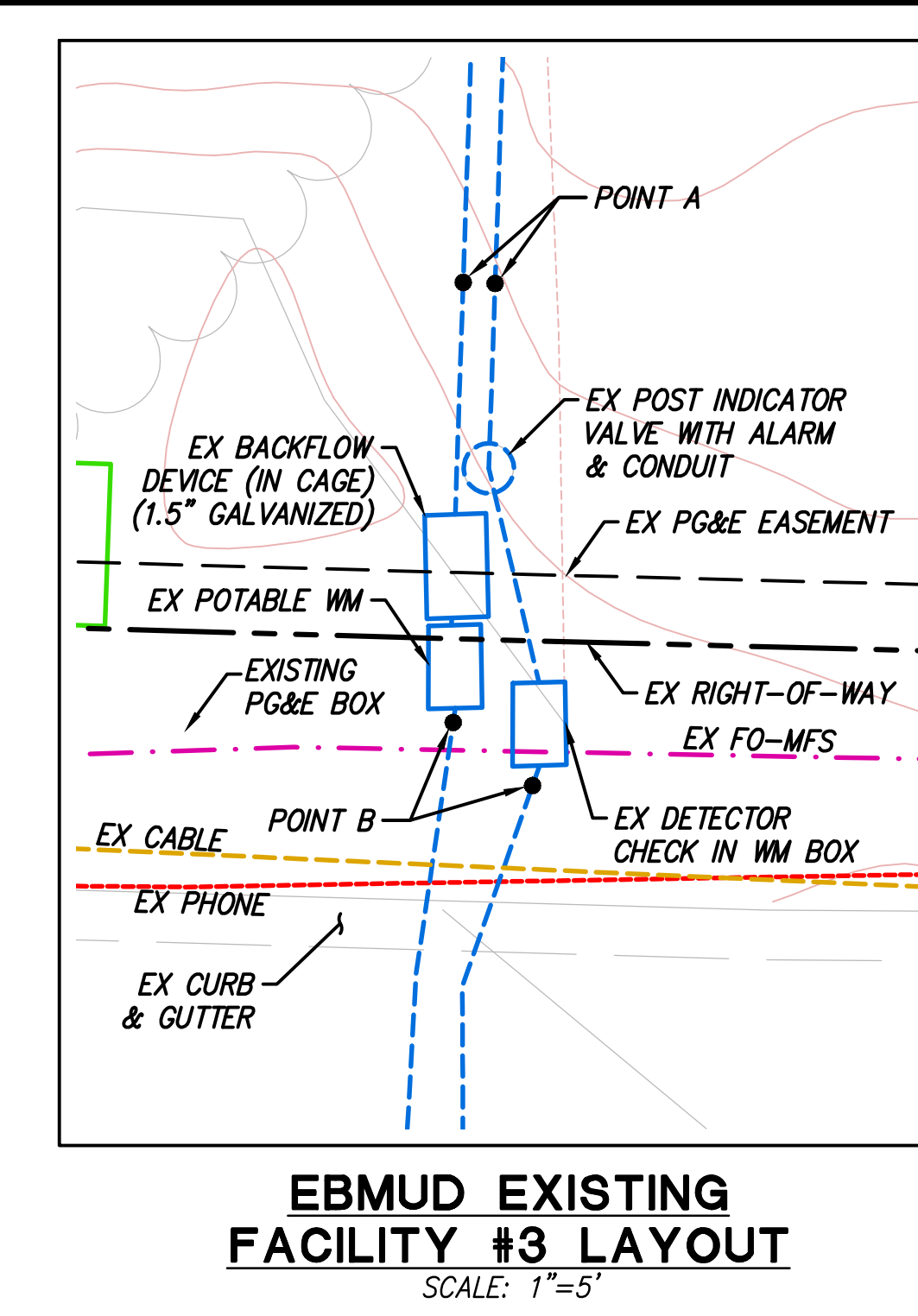
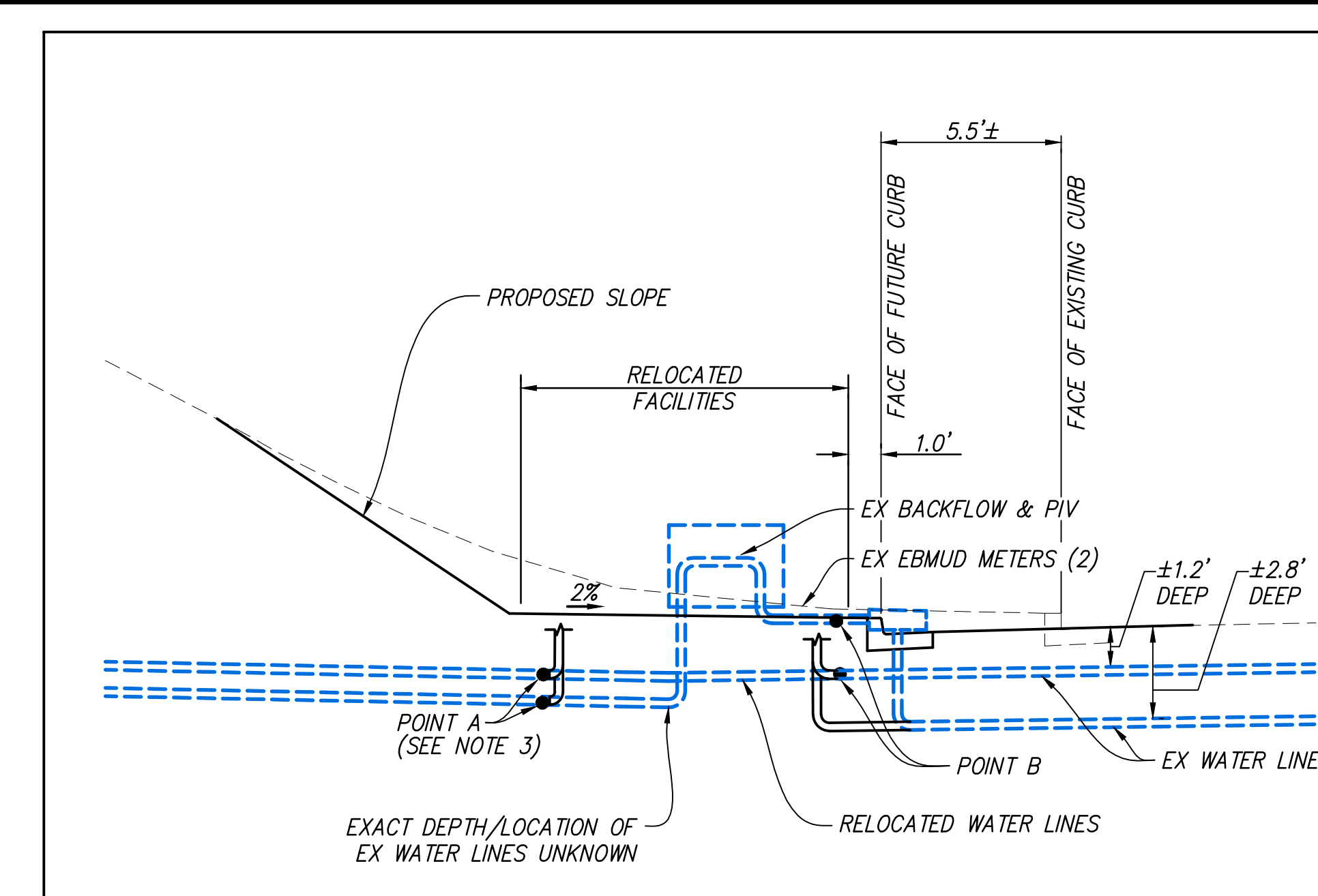
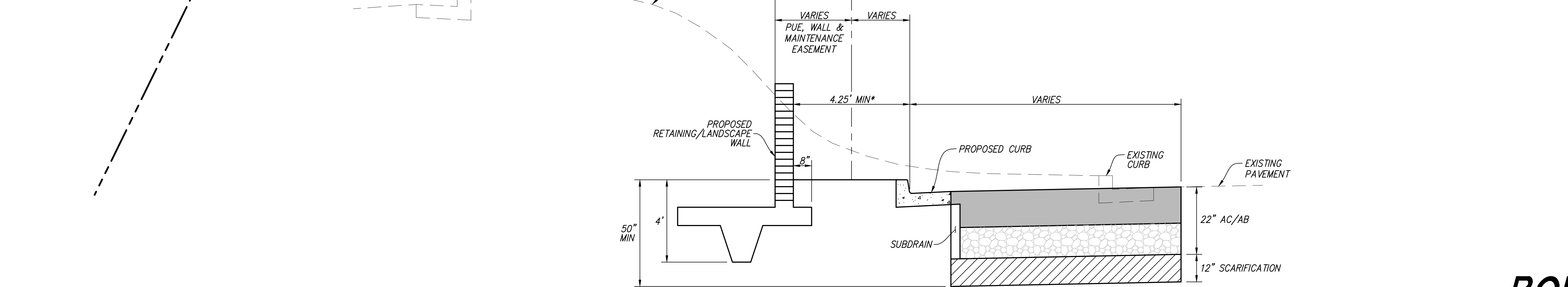
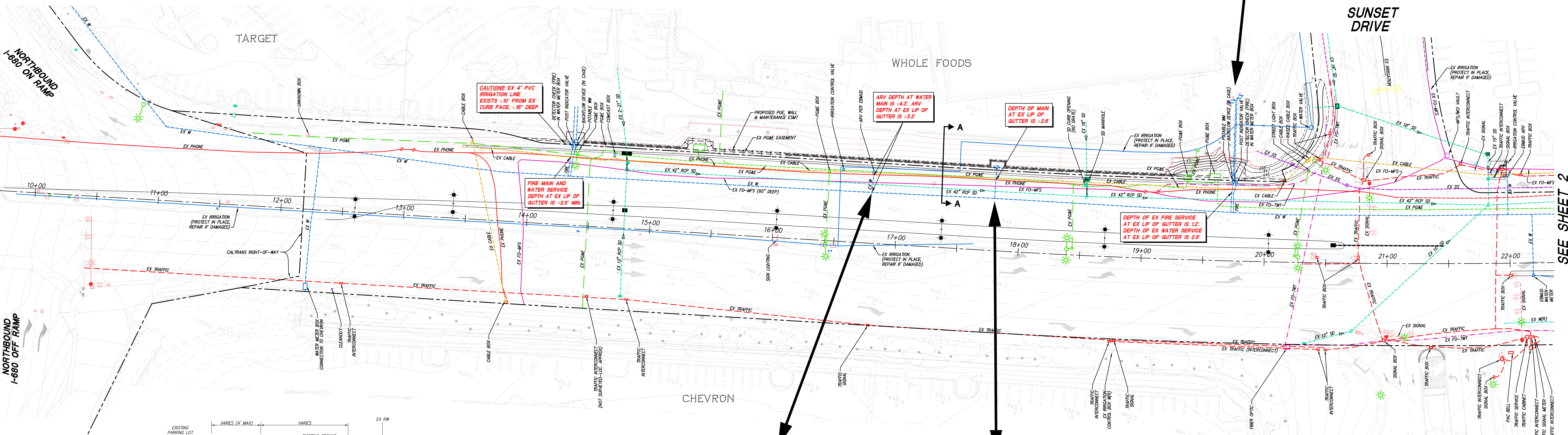


BOLLINGER WIDENING NOTE:
WIDENING GEOMETRICS FROM 10+00 TO 20+00 ARE PENDING CALTRANS APPROVAL

SEE "BOLLINGER CANYON ROAD PHASE 4 FRANCHISE UTILITY BOX RELOCATION PLAN" FOR PG&E AND CABLE RELOCATION SEQUENCING DETAILS.



- CONSTRUCTION SEQUENCE - FACILITY #3:**
1. WALL CONTRACTOR TO COORDINATE WITH EBMUD AND CITY CONTRACTOR ON SEQUENCING OF WALL CONSTRUCTION/BOX RELOCATION IN THIS AREA.
 2. EBMUD TO CONTACT U.S.A. FOR MARK-OUT 48 HOURS PRIOR TO START OF WORK. ALSO CONTACT RJA (AL JOHNSON 925-227-9100) 48 HOURS PRIOR TO START OF WORK FOR FUTURE TOP OF CURB STAKES.
 3. EBMUD TO NOTIFY PROPERTY OWNER OF SHUT DOWN, THEN SHUT OFF WATER SUPPLY.
 4. CITY CONTRACTOR TO EXPOSE EXISTING WATER & FIRE SERVICES AND VERIFY PIPE ELEVATIONS AT POINT (A). DISCONNECT SERVICES AT POINTS (A) & (B). REMOVE ALL PIPING AND APPURTENANCES BETWEEN THESE POINTS. APPURTENANCES TO BE SALVAGED FOR RE-USE. CONTRACTOR TO GRADE WORK AREA AS NECESSARY FOR UTILITY RELOCATION AND CONSTRUCTION (SEE SECTION 1).
 5. EBMUD TO LOWER EXISTING WATER & FIRE SERVICES TO ACHIEVE REQUIRED CLEARANCE FROM FUTURE PAVING OPERATIONS (SEE SECTION 4-A HEREON). IF EXISTING FRANCHISE UTILITIES PROHIBIT SAID LOWERING TO THE REQUIRED DEPTH, EBMUD SHALL PROVIDE A CONCRETE CAP OVER SAID SERVICES.
 6. EBMUD TO RELOCATE METERS, ETC., AS SHOWN.
 7. EBMUD TO RESTORE WATER SERVICE TO PROPERTY OWNER.
- NOTE:** ALL CLEARING, GRADING, AND STAKING TO BE PROVIDED BY CITY CONSULTANTS & CONTRACTORS.



- CONSTRUCTION SEQUENCE - FACILITY #1:**
1. ARV TO BE RELOCATED DURING STAGE TWO ROAD WIDENING OPERATION.
 2. ALL FACILITY #1 WORK TO BE COMPLETED BY EBMUD.
 3. PRIOR TO ROADWAY EXCAVATION IN THIS AREA, EBMUD WILL DISCONNECT ARV AND CUT LINE AT PAVEMENT SAWCUT. EBMUD TO CONTACT U.S.A. FOR MARK-OUT 48 HOURS PRIOR TO START OF WORK.
 4. ONCE PAVEMENT AB IS INSTALLED, EBMUD WILL REINSTALL ARV AT MAIN AND RUN NEW LINE THROUGH AB.
 5. EBMUD WILL RELOCATE ARV BETWEEN BACK OF NEW CURB AND FACE OF NEW WALL. THE NEW ARV LINE WILL HAVE TO RUN UNDER NEW CURB AND GUTTER.

- CONSTRUCTION SEQUENCE - FACILITY #2:**
1. HYDRANT TO BE RELOCATED DURING STAGE TWO ROAD WIDENING OPERATION.
 2. ALL FACILITY #2 WORK TO BE COMPLETED BY EBMUD.
 3. EBMUD TO CONTACT USA FOR MARK-OUT 48 HOURS PRIOR TO START OF WORK. CONTACT RJA (AL JOHNSON 925-227-9100) 48 HOURS PRIOR TO START OF WORK FOR FUTURE TOP OF CURB STAKES.
 4. EXISTING HYDRANT SERVICE TO BE LOWERED BY EBMUD TO ACHIEVE REQUIRED CLEARANCE FROM FUTURE PAVING OPERATIONS (SEE SECTION 4-A HEREON). IF EXISTING FRANCHISE UTILITIES PROHIBIT SAID LOWERING TO THE REQUIRED DEPTH, EBMUD SHALL PROVIDE A CONCRETE CAP OVER SAID SERVICE.

LEGEND

- EX FO-TWT
- EX FO-MFS
- EX CABLE
- EX PHONE
- EX TRAFFIC
- GAS (H&H) GAS
- GAS (GAS) GAS
- EX PG&E
- EX SD
- EX SS
- EX W
- EX (W)

FIBER OPTIC-TIME WARNER
FIBER OPTIC-MFS/MCI
CABLE TV-COMCAST
TELEPHONE-AT&T
TRAFFIC INTERCONNECT-CITY OF SAN RAMON
HIGH PRESSURE GAS-KINDER MORGAN
GAS-PG&E
ELECTRIC-PG&E
STORM DRAIN-CITY OF SAN RAMON
SANITARY SEWER-CCSSD
DOMESTIC WATER-DERRMA
RECLAIMED WATER-DERRMA
IRRIGATION
PROPOSED STAGE ONE GRADING
PROPOSED STAGE ONE RETAINING/LANDSCAPE WALL
PROPOSED STAGE TWO CURB, GUTTER & BACK OF WALK & MEDIAN
EXISTING RIGHT OF WAY
EXISTING TREES
EXISTING TREES TO BE REMOVED

NOTES:

1. PROPOSED RELOCATIONS SHOWN HEREON ARE ASSOCIATED WITH BOLLINGER CANYON ROAD PHASE 4 WIDENING IMPROVEMENTS ONLY.
2. EXISTING UTILITY LOCATIONS BASED ON AVAILABLE PLANS, SYSTEMS MAPS AND FIELD VERIFICATION OF UTILITY BOXES.
3. PROPOSED RIGHT-OF-WAY, PAVE'S, ETC. WILL BE ESTABLISHED ONCE FRANCHISE UTILITY RELOCATION IS COMPLETE.

RJA
RUGGERI-JENSEN-AZAR
ENGINEERS • PLANNERS • SURVEYORS
2541 WARREN DRIVE, SUITE 100, ROCKLIN, CA 95677
PHONE: (916) 830-8900 FAX: (916) 830-8909

**BOLLINGER CANYON ROAD
EBMUD FACILITY RELOCATION PLAN
(CITY CIPS 5324, 5322 & 5321)**

CITY OF SAN RAMON
ENGINEERING SERVICES DEPARTMENT
3180 CROW CANYON PLACE, SUITE 140
SAN RAMON, CALIFORNIA 94583

APPROVED BY: _____ R.C.E. NO. _____ DATE _____

SEE SHEET 2

CAMINO RAMON

CAUTION
HIGH PRESSURE
GAS MAINS!

CONSTRUCTION SEQUENCE - FACILITY #4:
1. WATER METER CANNOT BE REMOVED UNTIL STAGE TWO ROAD WIDENING OPERATION.
2. ALL FACILITY #4 WORK TO BE COMPLETED BY EBMUD.
3. EBMUD TO CONTACT USA FOR MARK-OUT 48 HOURS PRIOR TO START OF WORK.
4. EBMUD TO REMOVE EXISTING WATER METER AND SERVICE.

CAUTION!! EX 4" PVC IRRIGATION LINE EXISTS 1' FROM EX CURB FACE, 3" DEEP

SUNSET DRIVE

CITY CENTER PLAZA DISTRICT

CITY CENTER CITY HALL

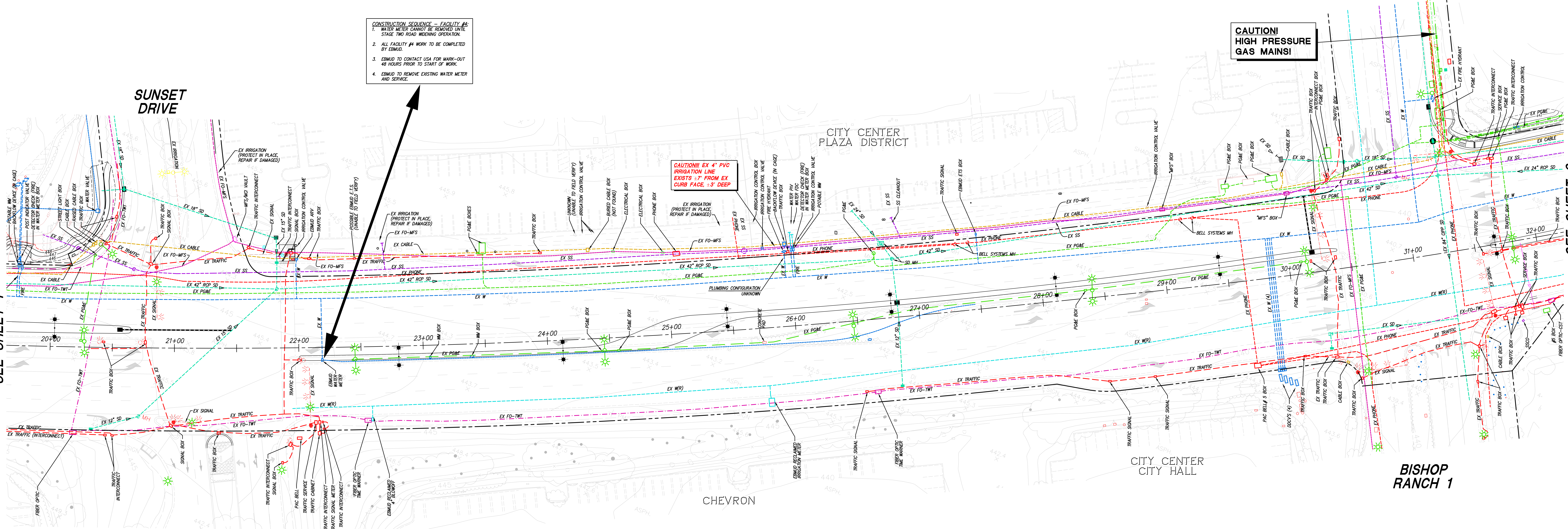
BISHOP RANCH 1

CHEVRON

CHEVRON PARK DRIVE

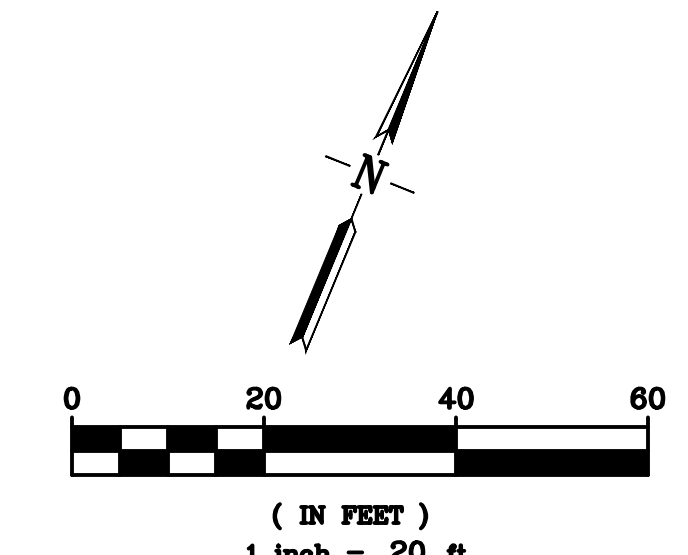
SEE SHEET 1

SEE SHEET 3



LEGEND

- EX FO-TWT
- EX FO-MFS
- EX CABLE
- EX PHONE
- EX TRAFFIC
- GAS - (K) GAS
- GAS - GAS
- EX PG&E
- EX SD
- EX SS
- EX W
- EX W(R)
- FIBER OPTIC-TIME WARNER
- FIBER OPTIC-MFS/MCI
- CABLE TV-COMCAST
- TELEPHONE-AT&T
- TRAFFIC INTERCONNECT-CITY OF SAN RAMON
- HIGH PRESSURE GAS-KINDER MORGAN
- GAS-PG&E
- ELECTRIC-PG&E
- STORM DRAIN-CITY OF SAN RAMON
- SANITARY SEWER-CCSD
- DOMESTIC WATER-EBMUD
- RECLAIMED WATER-DERMA
- IRRIGATION
- PROPOSED STAGE ONE GRADING
- PROPOSED STAGE TWO CURB, GUTTER & BACK OF WALK & MEDIAN
- EXISTING RIGHT OF WAY
- EXISTING TREES
- EXISTING TREES TO BE REMOVED



- NOTES:
- PROPOSED RELOCATIONS SHOWN HEREON ARE ASSOCIATED WITH BOLLINGER CANYON ROAD PHASE 4 WIDENING IMPROVEMENTS ONLY.
 - EXISTING UTILITY LOCATIONS BASED ON AVAILABLE PLANS, SYSTEMS MAPS AND FIELD VERIFICATION OF UTILITY BOXES.
 - PROPOSED RIGHT-OF-WAY, PAVE'S, ETC. WILL BE ESTABLISHED ONCE FRANCHISE UTILITY RELOCATION DESIGN IS COMPLETE.

**BOLLINGER CANYON ROAD
EBMUD FACILITY RELOCATION PLAN
(CITY CIPS 5324, 5322 & 5321)**

NOVEMBER 30, 2016

RJA
RUGGERI-JENSEN-AZAR
ENGINEERS • PLANNERS • SURVEYORS
2541 WARREN DRIVE, SUITE 100, ROCKLIN, CA 95677
PHONE: (916) 830-8900 FAX: (916) 830-8909
SHEET 2 OF 3

CONSTRUCTION SEQUENCE - FACILITY #6:

1. ALL FACILITY #6 WORK TO BE COMPLETED BY DERWA.
2. PRIOR TO ROADWAY EXCAVATION IN THIS AREA, DERWA WILL DISCONNECT ARV AND CUT LINE AT PAVEMENT SAWCUT. DERWA TO CONTACT U.S.A. FOR MARK-OUT 48 HOURS PRIOR TO START OF WORK.
3. ONCE PAVEMENT AS IS INSTALLED, DERWA WILL REINSTALL ARV AT MAIN AND RUN NEW LINE THROUGH AS.
4. DERWA WILL RELOCATE ARV BEHIND BACK OF NEW CURB. THE NEW ARV LINE WILL HAVE TO RUN UNDER NEW CURB AND GUTTER.

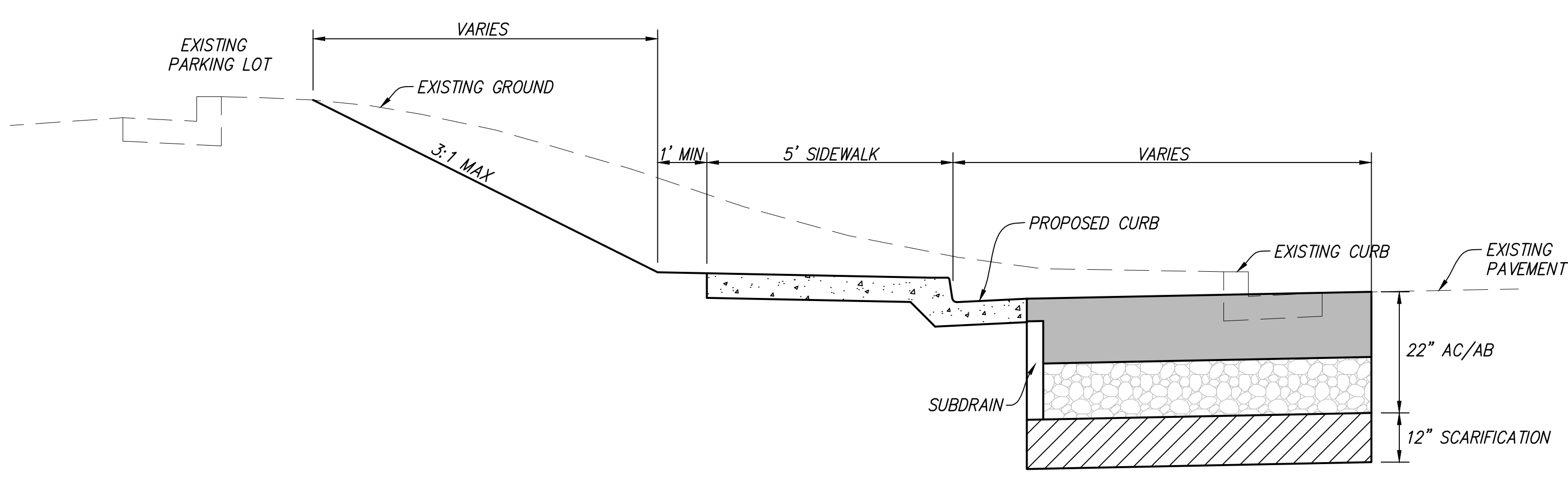
CONSTRUCTION SEQUENCE - FACILITY #7:

1. ALL FACILITY #7 WORK TO BE COMPLETED BY EBMUD.
2. EBMUD TO CONTACT USA FOR MARK-OUT 48 HOURS PRIOR TO START OF WORK.
3. EBMUD TO REMOVE EXISTING WATER METER AND SERVICE. SYSTEM CAPACITY CREDIT TO BE APPLIED TO NEW 1.5" SERVICE/ METER AT STATION 324+20.

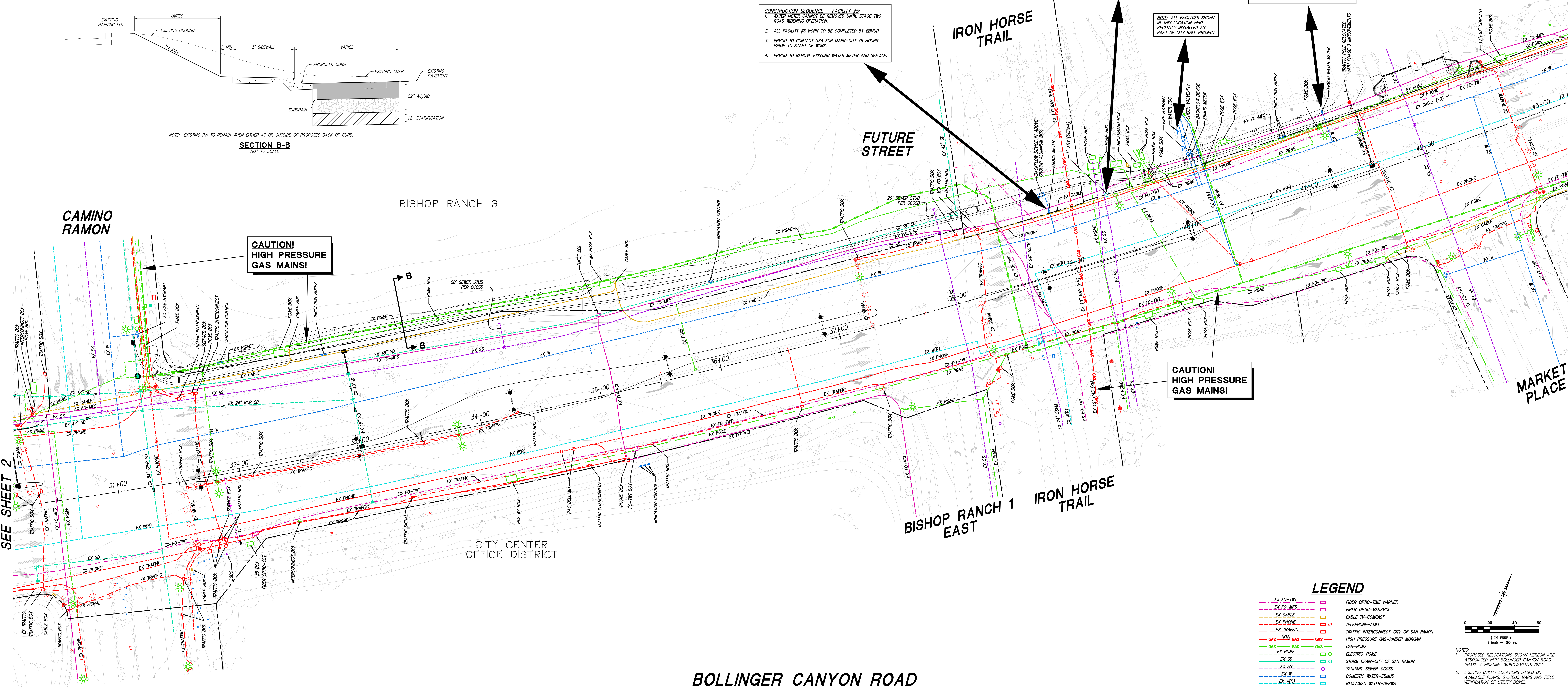
CONSTRUCTION SEQUENCE - FACILITY #5:

1. WATER METER CANNOT BE REMOVED UNTIL STAGE TWO ROAD WIDENING OPERATION.
2. ALL FACILITY #5 WORK TO BE COMPLETED BY EBMUD.
3. EBMUD TO CONTACT USA FOR MARK-OUT 48 HOURS PRIOR TO START OF WORK.
4. EBMUD TO REMOVE EXISTING WATER METER AND SERVICE.

NOTE: ALL FACILITIES SHOWN IN THIS LOCATION WERE RECENTLY INSTALLED AS PART OF CITY HALL PROJECT.



SECTION B-B
NOT TO SCALE



**CAUTION!
HIGH PRESSURE
GAS MAINS!**

**CAUTION!
HIGH PRESSURE
GAS MAINS!**

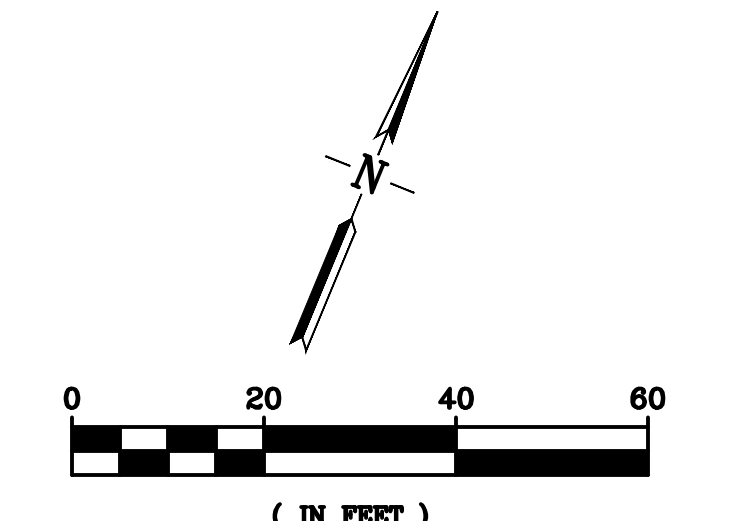
SEE SHEET 2

**BOLLINGER CANYON ROAD
EBMUD FACILITY RELOCATION PLAN
(CITY CIPS 5324, 5322 & 5321)**

NOVEMBER 30, 2016

LEGEND

- EX FO-TWT
- EX FO-MFS/MCI
- EX CABLE
- EX PHONE
- EX TRAFFIC
- GAS (K&M) GAS
- GAS (K&M) GAS
- EX SD
- EX SS
- EX W
- EX W(R)
- FIBER OPTIC-TIME WARNER
- FIBER OPTIC-MFS/MCI
- CABLE TV-COMCAST
- TELEPHONE-AT&T
- TRAFFIC INTERCONNECT-CITY OF SAN RAMON
- HIGH PRESSURE GAS-KINDER MORGAN
- GAS-PG&E
- ELECTRIC-PG&E
- STORM DRAIN-CITY OF SAN RAMON
- SANITARY SEWER-OCSSD
- DOMESTIC WATER-EBMUD
- RECLAIMED WATER-DERWA
- IRRIGATION
- PROPOSED STAGE ONE GRADING
- PROPOSED STAGE TWO CURB, GUTTER & BACK OF WALK & MEDIAN
- EXISTING RIGHT OF WAY
- EXISTING TREES
- EXISTING TREES TO BE REMOVED



NOTES:
1. PROPOSED RELOCATIONS SHOWN HEREON ARE ASSOCIATED WITH BOLLINGER CANYON ROAD PHASE 4 WIDENING IMPROVEMENTS ONLY.
2. EXISTING UTILITY LOCATIONS BASED ON AVAILABLE PLANS, SYSTEMS MAPS AND FIELD VERIFICATION OF UTILITY BOXES.
3. PROPOSED RIGHT-OF-WAY, P&E'S, ETC. WILL BE ESTABLISHED ONCE FRANCHISE UTILITY RELOCATION DESIGN IS COMPLETE.

RJA
RUGGERI-JENSEN-AZAR
ENGINEERS • PLANNERS • SURVEYORS
2541 WARREN DRIVE, SUITE 100, ROCKLIN, CA 95677
PHONE: (916) 430-8900 FAX: (916) 430-8909

BISHOP RANCH 1

BISHOP RANCH 3

CITY CENTER OFFICE DISTRICT

BISHOP RANCH 1 EAST
IRON HORSE TRAIL

CAMINO RAMON

MARKET PLACE

IRON HORSE TRAIL

FUTURE STREET