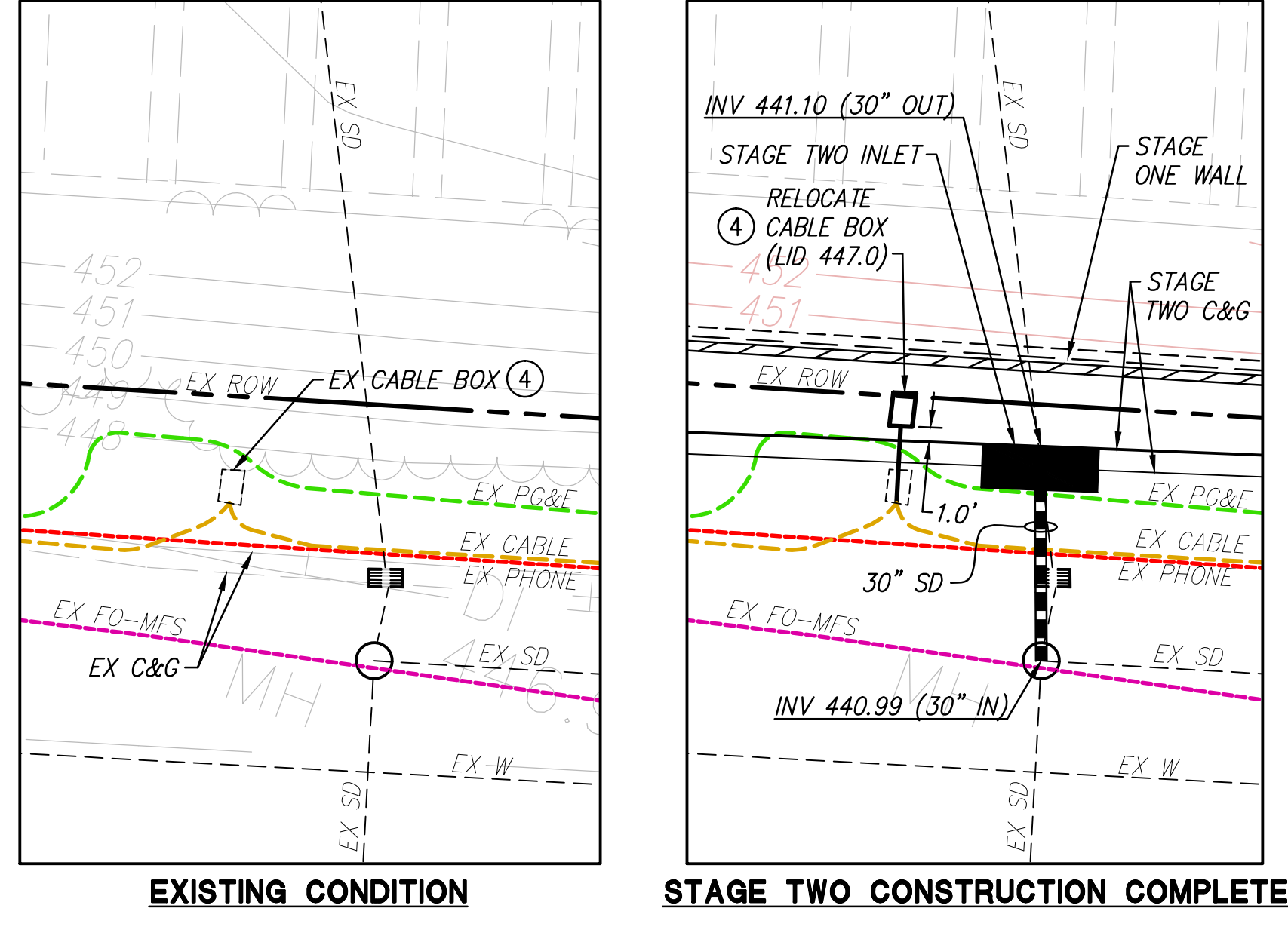


GENERAL NOTES:

- GENERAL PHASE 4 CONSTRUCTION SEQUENCING SHALL BE AS FOLLOWS:
 - EBMUD RELOCATIONS PER EBMUD RELOCATION PLAN DATED 7/5 BY RJA
 - STAGE ONE AND TWO TRAFFIC SIGNAL MODIFICATION IMPROVEMENTS PER PLANS DATED 7/5 BY HEXAGON
 - STAGE ONE, TWO & THREE IMPROVEMENTS PER PLANS DATED 7/5 BY RJA (INCLUDES UTILITY CAP CONSTRUCTION, LANDSCAPE AND IRRIGATION, AND STREET LIGHT REDESIGN)
- ALL CONSTRUCTION SEQUENCING FOR FRANCHISE UTILITIES IS REFERENCED RELATIVE TO THE ABOVE GENERAL PHASE 4 CONSTRUCTION SEQUENCING.
- THE INTENT OF THIS PLAN IS TO PROVIDE INFORMATION ON FRANCHISE UTILITY RELOCATION WORK RELATIVE TO OTHER BOLLINGER CANYON ROAD PHASE 4 IMPROVEMENTS AND TIMING/COORDINATION OF CONSTRUCTION THEREOF. ALL FRANCHISE UTILITY DESIGN/CONSTRUCTION SHALL BE DONE BY THE RESPECTIVE UTILITY COMPANIES. FRANCHISE UTILITY COMPANIES SHALL COORDINATE ALL WORK, WORK SCHEDULES, DAILY WORK HOURS, AND TRAFFIC CONTROL WITH THE CITY OF SAN RAMON, OTHER PHASE 4 CONTRACTORS, OTHER AGENCIES (EBMUD, EBRPD, ETC) AND ONE ANOTHER AS NECESSARY.
- THE PLAN VIEW TOPOGRAPHY SHOWN HEREON REPRESENTS THE EXISTING CONDITIONS OF BOLLINGER CANYON ROAD PRIOR TO CONSTRUCTION OF ANY PHASE 4 IMPROVEMENTS. VARIOUS STAGES OF PHASE 4 CONSTRUCTION ARE SHOWN IN THE CONSTRUCTION SEQUENCING DETAILS AS RELEVANT TO FRANCHISE UTILITY RELOCATION.
- LOCATIONS OF EXISTING UTILITY LINES SHOWN HEREON ARE BASED ON USA MARKOUT AND SURVEY, AND FRANCHISE UTILITY RECORD DRAWINGS. SEE BOLLINGER CANYON ROAD PHASE 4 POTHOLE EXHIBIT DATED 5/07/09 AND ASSOCIATED SPREADSHEET DATED 5/28/09 FOR ADDITIONAL INFORMATION. EXISTING UTILITIES IN THE GENERAL VICINITY OF RELOCATION WORK SHALL BE LOCATED IN THE FIELD PRIOR TO CONSTRUCTION ACTIVITIES.
- WHERE RELOCATED FACILITIES INCLUDE SERVICE LINES TO ADJACENT PROPERTIES, SERVICE LINES SHALL BE RELOCATED SUCH THAT THEY ARE NOT IN CONFLICT WITH STAGE ONE RETAINING WALL FOOTINGS. 1' MINIMUM CLEARANCE (BOTTOM OF FOOTING KEY TO TOP OF CONDUIT) SHALL BE MAINTAINED. BOTTOM OF FOOTING ELEVATIONS ARE SHOWN ON THIS PLAN FOR REFERENCE.
- UTILITY RELOCATIONS SHALL BE WITHIN EXISTING/PROPOSED PUES.
- RELOCATED FACILITY LD ELEVATIONS ARE BASED ON CONFORMANCE TO COMPLETED PHASE 4 ROAD WIDENING IMPROVEMENTS. LIDS MAY BE ABOVE OR BELOW ADJACENT GRADES IN THE INTERIM CONDITION.
- INTERIM GRADING AND RELOCATED BOXES SHOWN HEREON SHALL BE STAKED BY RJA. ALL STAKING REQUESTS SHALL BE MADE A MINIMUM OF TWO (2) WORKING DAYS PRIOR TO ACTUAL NEED.
- INFORMATION ON FRANCHISE UTILITY RELOCATION/NEW CONSTRUCTION OUTSIDE OF PHASE 4 LIMITS OF WORK IS NOT INCLUDED HEREON.
- PROTECT ALL EXISTING IRRIGATION IN PLACE. REPLACE IN KIND/REPAIR IF DAMAGED.



CONSTRUCTION SEQUENCING LEGEND:

- FACILITY TO BE RELOCATED PRIOR TO ANY IMPROVEMENTS PER INTERIM GRADING AS SHOWN HEREON. SEE ALSO GENERAL NOTE #6.
- FACILITY TO BE RELOCATED IN COORDINATION WITH STAGE ONE WALL CONSTRUCTION.
- FACILITY TO BE RELOCATED PRIOR TO STAGE TWO IMPROVEMENTS AS SHOWN HEREON.
- FACILITY TO BE RELOCATED AFTER STAGE ONE IMPROVEMENTS AND IN COORDINATION WITH CONSTRUCTION OF STAGE TWO CURB & GUTTER. SEE ALSO GENERAL NOTE #6.
- FIBER OPTIC VAULTS SHALL REMAIN IN PLACE AND LOWERED TO GRADE. REPLACE VAULTS WITH H2O TRAFFIC RATED MATERIALS WHERE NECESSARY. VAULTS SHALL BE DROPPED TO GRADE IN COORDINATION WITH STAGE TWO CONSTRUCTION. LD ELEVATIONS SHOWN CORRESPOND TO TWINGED PAVEMENT GRADES AFTER STAGE TWO IS COMPLETE. SEE IMPROVEMENT PLANS FOR ADDITIONAL INFORMATION.
- EXISTING BOX TO REMAIN IN PLACE AND BE ADJUSTED TO GRADE WITH STAGE TWO CONSTRUCTION.
- EXISTING FACILITY TO REMAIN IN PLACE THROUGHOUT PHASE 4 CONSTRUCTION, HOWEVER MAY REQUIRE RELOCATION/ADJUSTMENT TO GRADE WITH FUTURE CITY CENTER IMPROVEMENTS.
- PG&E CONDUIT TO BE PLACED/LOWERED AS NECESSARY TO OBTAIN MINIMUM CLEARANCE TO STAGE ONE RETAINING WALL FOOTING (SEE NOTE 6).
- EXISTING FACILITY TO REMAIN. PROTECT IN PLACE.

PLAN REFERENCE KEY NOTES:

- SEE LANDSCAPE PLANS FOR ADDITIONAL DETAIL.
- SEE SEPARATE SIGNAL MODIFICATION AND STREETLIGHT PLANS FOR ADDITIONAL DETAIL.
- SEE STREETLIGHT PLANS FOR ADDITIONAL DETAIL.
- SEE EBMUD RELOCATION PLAN FOR ADDITIONAL INFORMATION.

FRANCHISE UTILITY CONTACTS:

COMPANY:	CONTACT NAME:	CONTACT NUMBER:
PG&E	MATT HERRON	(925) 674-6376
COMCAST	MOHAMMED ALFAAZ	(925) 605-8181
AT&T	WENDY AGRAVADOR	(925) 328-6815
MFS/MCI	REBECCA DANIELS	(925) 766-6392
TIME WARNER	ROB HADLEY	(925) 383-6326
KINDER MORGAN	GRANT MCCLELLAN	(510) 453-8961

PHASE 4 CONTACTS:

AGENCY/COMPANY:	CONTACT NAME:	CONTACT NUMBER:
CITY OF SAN RAMON	THERESA PETERSON	(925) 973-2685
EBMUD	DUSTIN LAVALLEE	(510) 287-1152
EBRPD	JIM TOWNSEND	(510) 544-2602
RUGGERI-JENSEN-AZAR	JOHN ZELLMER	(916) 630-8900
	CHRIS RUGGERI	(916) 630-8900
STAKING REQUESTS	AL JOHNSON	(925) 227-9100

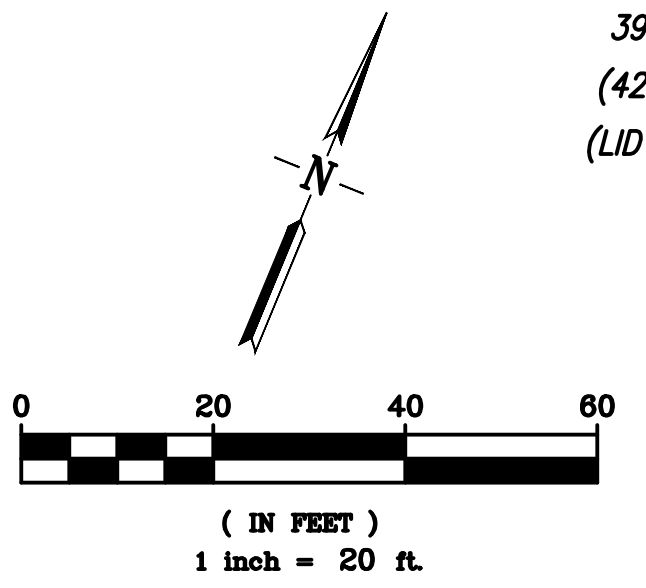
LEGEND

- EX FO-TWT
- EX FO-MFS
- EX CABLE
- EX PHONE
- EX TRAFFIC
- GAS (H&H)
- GAS (PG&E)
- EX PG&E
- EX SD
- EX SS
- EX W
- EX W(R)
- EX IRRIGATION
- EX PG&E
- EX PG&E
- 39+55±
- (42+55±)
- (LD 445.8)
- FIBER OPTIC (TIME WARNER)
- FIBER OPTIC (MFS/MCI)
- CABLE TV (COMCAST)
- TELEPHONE (AT&T)
- TRAFFIC INTERCONNECT (CITY OF SAN RAMON)
- HIGH PRESSURE GAS (KINDER MORGAN)
- GAS (PG&E)
- ELECTRIC (PG&E)
- STORM DRAIN (CITY OF SAN RAMON)
- SANITARY SEWER (COCSD)
- DOMESTIC WATER (EBMUD)
- RECLAIMED WATER (DERWA)
- IRRIGATION
- PG&E JUT (BEFORE 2010 RELOCATION)
- PG&E JUT (AFTER 2010 RELOCATION)
- PROPOSED PG&E JUT
- EXISTING BOX STATION
- PROPOSED BOX STATION
- PROPOSED BOX ELEVATION

BOLLINGER WIDENING NOTE:
 WIDENING GEOMETRICS FROM 10+00 TO 20+00 ARE PENDING CALTRANS APPROVAL

**BOLLINGER CANYON ROAD PHASE 4 IMPROVEMENTS
 FRANCHISE UTILITY BOX RELOCATION PLAN
 (CITY CIP 5324, 5322 & 5321)**

OCTOBER 24, 2016



LIMITS OF PH4 IMPROVEMENTS
NORTHBOND I-680 ON RAMP

LIMITS OF PH4 IMPROVEMENTS

NORTHBOND I-680 OFF RAMP

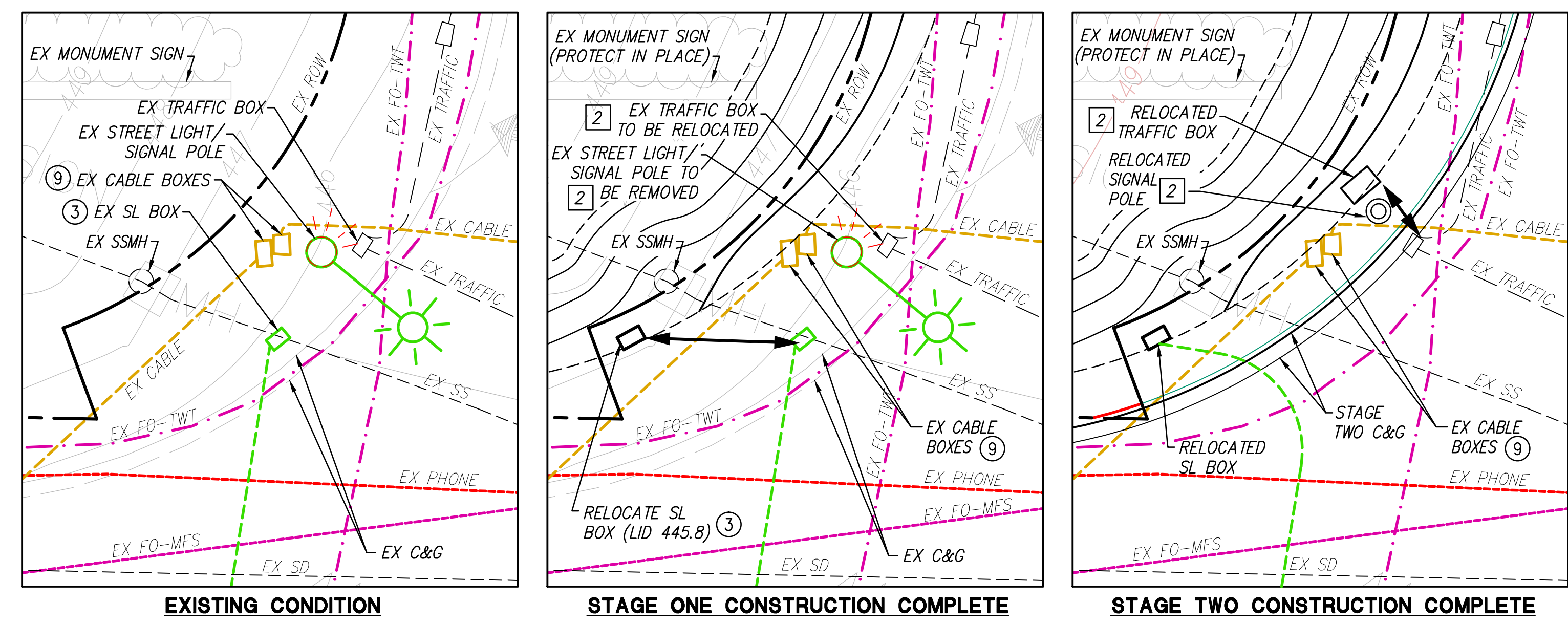
TARGET

WHOLE FOODS

CHEVRON

NO PHASE 4 WIDENING IN THIS AREA

SEE SHEET 2



RELOCATION SEQUENCING DETAILS
SCALE: 1"=10'

- GENERAL NOTES:**
- GENERAL PHASE 4 CONSTRUCTION SEQUENCING SHALL BE AS FOLLOWS:
 - EBMUD RELOCATIONS PER EBMUD RELOCATION PLAN DATED 7/5 BY RJA
 - STAGE ONE AND TWO TRAFFIC SIGNAL MODIFICATION IMPROVEMENTS PER PLANS DATED 7/5 BY HEXAGON
 - STAGE ONE, TWO & THREE IMPROVEMENTS PER PLANS DATED 7/5 BY RJA (INCLUDES UTILITY CAP CONSTRUCTION, LANDSCAPE AND IRRIGATION, AND STREET LIGHT REDESIGN)
 - ALL CONSTRUCTION SEQUENCING FOR FRANCHISE UTILITIES IS REFERENCED RELATIVE TO THE ABOVE GENERAL PHASE 4 CONSTRUCTION SEQUENCING.
 - THE INTENT OF THIS PLAN IS TO PROVIDE INFORMATION ON FRANCHISE UTILITY RELOCATION WORK RELATIVE TO OTHER BOLLINGER CANYON ROAD PHASE 4 IMPROVEMENTS AND TIMING/COORDINATION OF CONSTRUCTION THEREOF. ALL FRANCHISE UTILITY DESIGN/CONSTRUCTION SHALL BE DONE BY THE RESPECTIVE UTILITY COMPANIES. FRANCHISE UTILITY COMPANIES SHALL COORDINATE ALL WORK, WORK SCHEDULES, DAILY WORK HOURS, AND TRAFFIC CONTROL WITH THE CITY OF SAN RAMON, OTHER PHASE 4 CONTRACTORS, OTHER AGENCIES (EBMUD, EBRPD, ETC) AND ONE ANOTHER AS NECESSARY.
 - THE PLAN VIEW TOPOGRAPHY SHOWN HEREON REPRESENTS THE EXISTING CONDITIONS OF BOLLINGER CANYON ROAD PRIOR TO CONSTRUCTION OF ANY PHASE 4 IMPROVEMENTS. VARIOUS STAGES OF PHASE 4 CONSTRUCTION ARE SHOWN IN THE CONSTRUCTION SEQUENCING DETAILS AS RELEVANT TO FRANCHISE UTILITY RELOCATION.
 - LOCATIONS OF EXISTING UTILITY LINES SHOWN HEREON ARE BASED ON USA MARKOUT AND SURVEY AND FRANCHISE UTILITY RECORD DRAWINGS. SEE BOLLINGER CANYON ROAD PHASE 4 POI/HOLE EXHIBIT DATED 5/07/09 AND ASSOCIATED SPREADSHEET DATED 5/28/09 FOR ADDITIONAL INFORMATION. EXISTING UTILITIES IN THE GENERAL VICINITY OF RELOCATION WORK SHALL BE LOCATED IN THE FIELD PRIOR TO CONSTRUCTION ACTIVITIES.
 - WHERE RELOCATED FACILITIES INCLUDE SERVICE LINES TO ADJACENT PROPERTIES, SERVICE LINES SHALL BE RELOCATED SUCH THAT THEY ARE NOT IN CONFLICT WITH STAGE ONE RETAINING WALL FOOTINGS. 1' MINIMUM CLEARANCE (BOTTOM OF FOOTING KEY TO TOP OF CONDUIT) SHALL BE MAINTAINED. BOTTOM OF FOOTING ELEVATIONS ARE SHOWN ON THIS PLAN FOR REFERENCE.
 - UTILITY RELOCATIONS SHALL BE WITHIN EXISTING/PROPOSED PUES.
 - RELOCATED FACILITY LD ELEVATIONS ARE BASED ON CONFORMANCE TO COMPLETED PHASE 4 ROAD WIDENING IMPROVEMENTS. LIDS MAY BE ABOVE OR BELOW ADJACENT GRADES IN THE INTERIM CONDITION.
 - INTERIM GRADING AND RELOCATED BOXES SHOWN HEREON SHALL BE STAKED BY RJA. ALL STAKING REQUESTS SHALL BE MADE A MINIMUM OF TWO (2) WORKING DAYS PRIOR TO ACTUAL NEED.
 - INFORMATION ON FRANCHISE UTILITY RELOCATION/NEW CONSTRUCTION OUTSIDE OF PHASE 4 LIMITS OF WORK IS NOT INCLUDED HEREON.
 - PROTECT ALL EXISTING IRRIGATION IN PLACE. REPLACE IN KIND/REPAIR IF DAMAGED.

- CONSTRUCTION SEQUENCING LEGEND:**
- FACILITY TO BE RELOCATED PRIOR TO ANY IMPROVEMENTS PER INTERIM GRADING AS SHOWN HEREON. SEE ALSO GENERAL NOTE #6.
 - FACILITY TO BE RELOCATED IN COORDINATION WITH STAGE ONE WALL CONSTRUCTION.
 - FACILITY TO BE RELOCATED PRIOR TO STAGE TWO IMPROVEMENTS AS SHOWN HEREON.
 - FACILITY TO BE RELOCATED AFTER STAGE ONE IMPROVEMENTS AND IN COORDINATION WITH CONSTRUCTION OF STAGE TWO CURB & GUTTER. SEE ALSO GENERAL NOTE #6.
 - FIBER OPTIC VAULTS SHALL REMAIN IN PLACE AND LOWERED TO GRADE. REPLACE EXISTING VAULTS WITH HD2 TRAFFIC SIGNAL MATERIALS WHERE NECESSARY. VAULTS SHALL BE DROPPED TO GRADE IN COORDINATION WITH STAGE TWO CONSTRUCTION. LD ELEVATIONS SHOWN CORRESPOND TO FINISHED PAVEMENT GRADES AFTER STAGE TWO IS COMPLETE. SEE IMPROVEMENT PLANS FOR ADDITIONAL INFORMATION.
 - EXISTING BOX TO REMAIN IN PLACE AND BE ADJUSTED TO GRADE WITH STAGE TWO CONSTRUCTION.
 - EXISTING FACILITY TO REMAIN IN PLACE THROUGHOUT PHASE 4 CONSTRUCTION, HOWEVER MAY REQUIRE RELOCATION/ADJUSTMENT TO GRADE WITH FUTURE CITY CENTER IMPROVEMENTS.
 - PG&E CONDUIT TO BE PLACED/LOWERED AS NECESSARY TO OBTAIN MINIMUM CLEARANCE TO STAGE ONE RETAINING WALL FOOTING (SEE NOTE 6).
 - EXISTING FACILITY TO REMAIN. PROTECT IN PLACE.

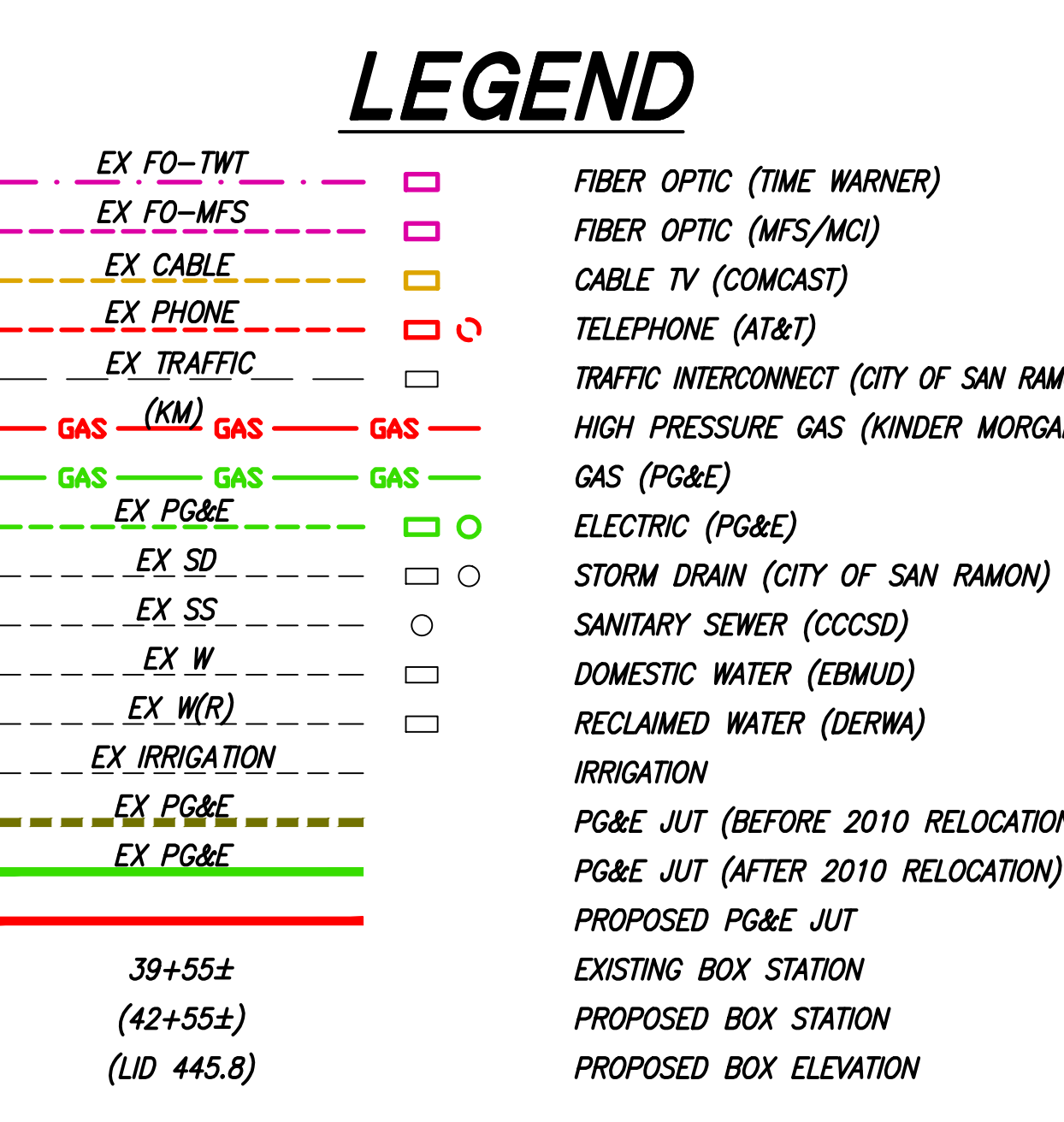
- PLAN REFERENCE KEY NOTES:**
- SEE LANDSCAPE PLANS FOR ADDITIONAL DETAIL.
 - SEE SEPARATE SIGNAL MODIFICATION AND STREETLIGHT PLANS FOR ADDITIONAL DETAIL.
 - SEE STREETLIGHT PLANS FOR ADDITIONAL DETAIL.
 - SEE EBMUD RELOCATION PLAN FOR ADDITIONAL INFORMATION.

FRANCHISE UTILITY CONTACTS:

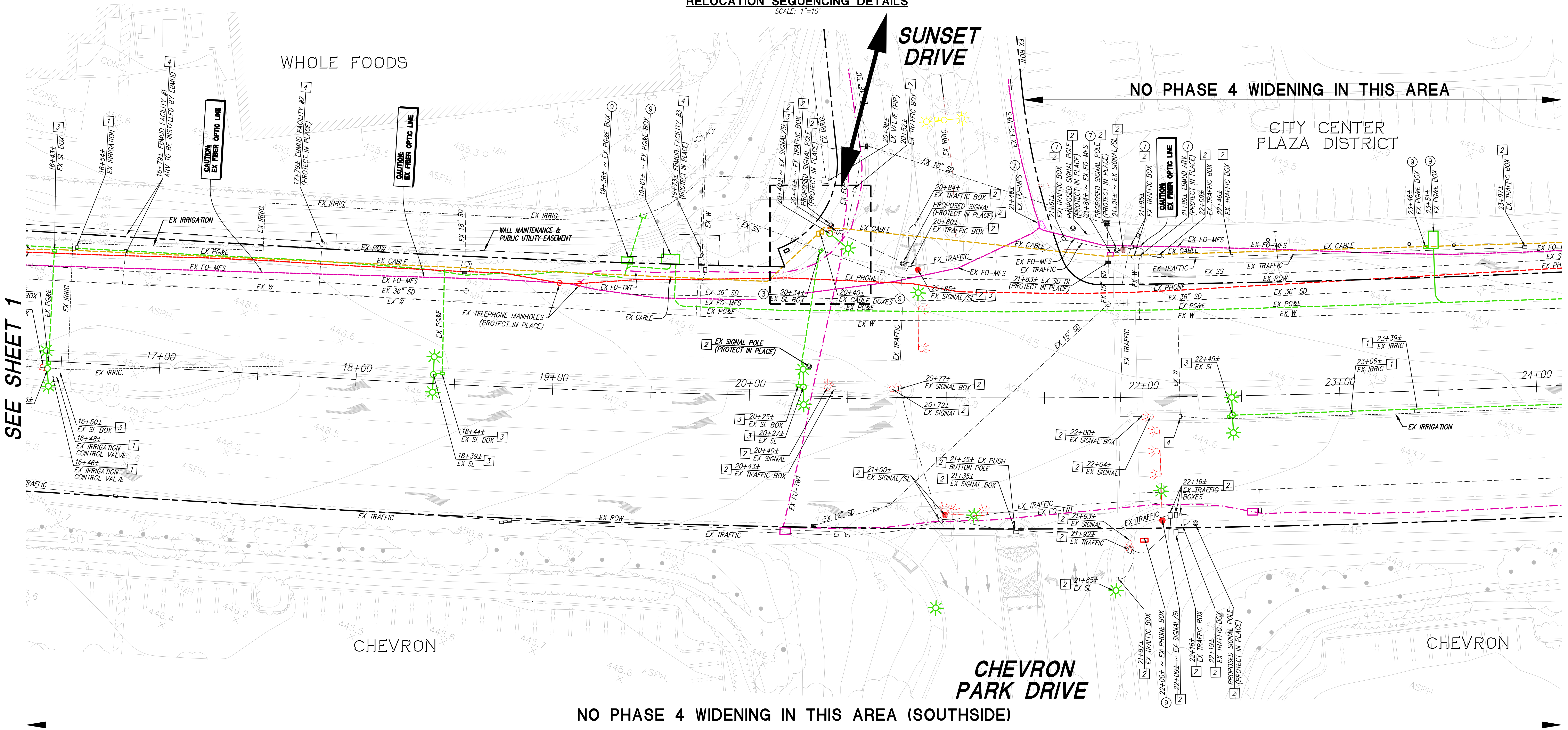
COMPANY:	CONTACT NAME:	CONTACT NUMBER:
PG&E	MATT HERRON	(925) 674-6376
COMCAST	MOHAMMED ALFAAZ	(925) 605-8181
AT&T	WENDY AGRADADOR	(925) 328-6815
MFS/MCI	REBECCA DANIELS	(925) 766-6392
TIME WARNER	ROB HADLEY	(925) 383-6326
KINDER MORGAN	GRANT MCCLELLAN	(510) 453-8961

PHASE 4 CONTACTS:

AGENCY/COMPANY:	CONTACT NAME:	CONTACT NUMBER:
CITY OF SAN RAMON	THERESA PETERSON	(925) 973-2685
EBMUD	DUSTIN LAVALLEE	(510) 287-1152
EBRPD	JIM TOWNSEND	(510) 544-2602
RUGGERI-JENSEN-AZAR	JOHN ZELLMER CHRIS RUGGERI	(916) 630-8900
STAKING REQUESTS	AL JOHNSON	(925) 227-9100

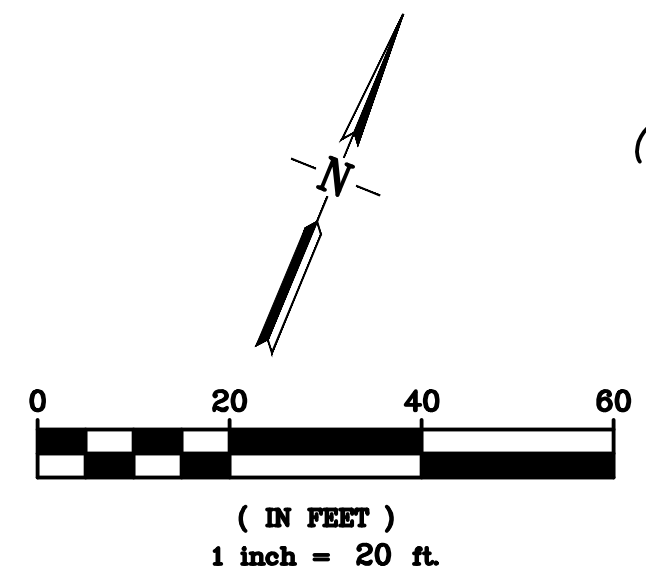


BOLLINGER WIDENING NOTE:
WIDENING GEOMETRICS FROM 10+00 TO 20+00 ARE PENDING CALTRANS APPROVAL



**BOLLINGER CANYON ROAD PHASE 4 IMPROVEMENTS
FRANCHISE UTILITY BOX RELOCATION PLAN
(CITY CIP 5324, 5322 & 5321)**

OCTOBER 24, 2016



- GENERAL NOTES:**
- GENERAL PHASE 4 CONSTRUCTION SEQUENCING SHALL BE AS FOLLOWS:
 - EBMUD RELOCATIONS PER EBMUD RELOCATION PLAN DATED 7/5 BY RJA
 - STAGE ONE AND TWO TRAFFIC SIGNAL MODIFICATION IMPROVEMENTS PER PLANS DATED 7/5 BY HEXAGON
 - STAGE ONE, TWO & THREE IMPROVEMENTS PER PLANS DATED 7/5 BY RJA (INCLUDES UTILITY CAP CONSTRUCTION, LANDSCAPE AND IRRIGATION, AND STREET LIGHT REDESIGN)
 - ALL CONSTRUCTION SEQUENCING FOR FRANCHISE UTILITIES IS REFERENCED RELATIVE TO THE ABOVE GENERAL PHASE 4 CONSTRUCTION SEQUENCING.
 - THE INTENT OF THIS PLAN IS TO PROVIDE INFORMATION ON FRANCHISE UTILITY RELOCATION WORK RELATIVE TO OTHER BOLLINGER CANYON ROAD PHASE 4 IMPROVEMENTS AND TIMING/COORDINATION OF CONSTRUCTION THEREOF. ALL FRANCHISE UTILITY DESIGN/CONSTRUCTION SHALL BE DONE BY THE RESPECTIVE UTILITY COMPANIES. FRANCHISE UTILITY COMPANIES SHALL COORDINATE ALL WORK, WORK SCHEDULES, DAILY WORK HOURS, AND TRAFFIC CONTROL WITH THE CITY OF SAN RAMON, OTHER PHASE 4 CONTRACTORS, OTHER AGENCIES (EBMUD, EBRPD, ETC) AND ONE ANOTHER AS NECESSARY.
 - THE PLAN VIEW TOPOGRAPHY SHOWN HEREON REPRESENTS THE EXISTING CONDITIONS OF BOLLINGER CANYON ROAD PRIOR TO CONSTRUCTION OF ANY PHASE 4 IMPROVEMENTS. VARIOUS STAGES OF PHASE 4 CONSTRUCTION ARE SHOWN IN THE CONSTRUCTION SEQUENCING DETAILS AS RELEVANT TO FRANCHISE UTILITY RELOCATION.
 - LOCATIONS OF EXISTING UTILITY LINES SHOWN HEREON ARE BASED ON USA MARKOUT AND SURVEY, AND FRANCHISE UTILITY RECORD DRAWINGS. SEE BOLLINGER CANYON ROAD PHASE 4 POTHOLE EXHIBIT DATED 5/07/09 AND ASSOCIATED SPREADSHEET DATED 5/28/09 FOR ADDITIONAL INFORMATION. EXISTING UTILITIES IN THE GENERAL VICINITY OF RELOCATION WORK SHALL BE LOCATED IN THE FIELD PRIOR TO CONSTRUCTION ACTIVITIES.
 - WHERE RELOCATED FACILITIES INCLUDE SERVICE LINES TO ADJACENT PROPERTIES, SERVICE LINES SHALL BE RELOCATED SUCH THAT THEY ARE NOT IN CONFLICT WITH STAGE ONE RETAINING WALL FOOTINGS. 1' MINIMUM CLEARANCE (BOTTOM OF FOOTING KEY TO TOP OF CONDUIT) SHALL BE MAINTAINED. BOTTOM OF FOOTING ELEVATIONS ARE SHOWN ON THIS PLAN FOR REFERENCE.
 - UTILITY RELOCATIONS SHALL BE WITHIN EXISTING/PROPOSED PUES.
 - RELOCATED FACILITY LID ELEVATIONS ARE BASED ON CONFORMANCE TO COMPLETED PHASE 4 ROAD WIDENING IMPROVEMENTS. LIDS MAY BE ABOVE OR BELOW ADJACENT GRADES IN THE INTERIM CONDITION.
 - INTERIM GRADING AND RELOCATED BOXES SHOWN HEREON SHALL BE STAKED BY RJA. ALL STAKING REQUESTS SHALL BE MADE A MINIMUM OF TWO (2) WORKING DAYS PRIOR TO ACTUAL NEED.
 - INFORMATION ON FRANCHISE UTILITY RELOCATION/NEW CONSTRUCTION OUTSIDE OF PHASE 4 LIMITS OF WORK IS NOT INCLUDED HEREON.
 - PROTECT ALL EXISTING IRRIGATION IN PLACE. REPLACE IN KIND/REPAIR IF DAMAGED.

NO PHASE 4 WIDENING
IN THIS AREA (NORTH SIDE)

CITY CENTER
PLAZA DISTRICT

CAMINO
RAMON



NO PHASE 4 WIDENING
IN THIS AREA (SOUTH SIDE)

**BOLLINGER CANYON ROAD PHASE 4 IMPROVEMENTS
FRANCHISE UTILITY BOX RELOCATION PLAN
(CITY CIP 5324, 5322 & 5321)**

OCTOBER 24, 2016

CONSTRUCTION SEQUENCING LEGEND:

- FACILITY TO BE RELOCATED PRIOR TO ANY IMPROVEMENTS PER INTERIM GRADING AS SHOWN HEREON. SEE ALSO GENERAL NOTE #6.
- FACILITY TO BE RELOCATED IN COORDINATION WITH STAGE ONE WALL CONSTRUCTION.
- FACILITY TO BE RELOCATED PRIOR TO STAGE TWO IMPROVEMENTS AS SHOWN HEREON.
- FACILITY TO BE RELOCATED AFTER STAGE ONE IMPROVEMENTS AND IN COORDINATION WITH CONSTRUCTION OF STAGE TWO CURB & GUTTER. SEE ALSO GENERAL NOTE #6.
- FIBER OPTIC VAULTS SHALL REMAIN IN PLACE AND LOWERED TO GRADE. REPLACE EXISTING WALL TRAFFIC SIGNALS WITH HD TRAFFIC SIGNALS WHERE NECESSARY. VAULTS SHALL BE DROPPED TO GRADE IN COORDINATION WITH STAGE TWO CONSTRUCTION. LID ELEVATIONS SHOWN CORRESPOND TO FINISHED PAVEMENT GRADES AFTER STAGE TWO IS COMPLETE. SEE IMPROVEMENT PLANS FOR ADDITIONAL INFORMATION.
- EXISTING BOX TO REMAIN IN PLACE AND BE ADJUSTED TO GRADE WITH STAGE TWO CONSTRUCTION.
- EXISTING FACILITY TO REMAIN IN PLACE THROUGHOUT PHASE 4 CONSTRUCTION, HOWEVER MAY REQUIRE RELOCATION/ADJUSTMENT TO GRADE WITH FUTURE CITY CENTER IMPROVEMENTS.
- PG&E CONDUIT TO BE PLACED/LOWERED AS NECESSARY TO OBTAIN MINIMUM CLEARANCE TO STAGE ONE RETAINING WALL FOOTING (SEE NOTE 6).
- EXISTING FACILITY TO REMAIN. PROTECT IN PLACE.

PLAN REFERENCE KEY NOTES:

- SEE LANDSCAPE PLANS FOR ADDITIONAL DETAIL.
- SEE SEPARATE SIGNAL MODIFICATION AND STREETLIGHT PLANS FOR ADDITIONAL DETAIL.
- SEE STREETLIGHT PLANS FOR ADDITIONAL DETAIL.
- SEE EBMUD RELOCATION PLAN FOR ADDITIONAL INFORMATION.

FRANCHISE UTILITY CONTACTS:

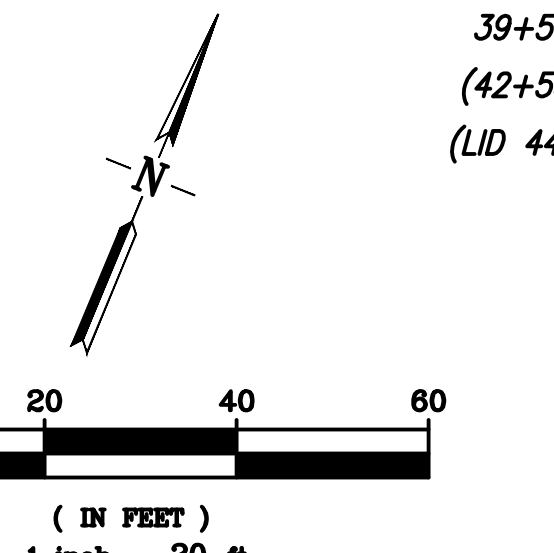
COMPANY:	CONTACT NAME:	CONTACT NUMBER:
PG&E	MATT HERRON	(925) 674-6376
COMCAST	MOHAMMED ALFAAZ	(925) 605-8181
AT&T	WENDY AGRAVADOR	(925) 328-8815
MFS/MCI	REBECCA DANIELS	(925) 766-6392
TIME WARNER	ROB HADLEY	(925) 383-6326
KINDER MORGAN	GRANT MCCLELLAN	(510) 453-8961

PHASE 4 CONTACTS:

AGENCY/COMPANY:	CONTACT NAME:	CONTACT NUMBER:
CITY OF SAN RAMON	THERESA PETERSON	(925) 973-2685
EBMUD	DUSTIN LAVALLEE	(510) 287-1152
EBRPD	JIM TOWNSEND	(510) 544-2602
RUGGERI-JENSEN-AZAR	JOHN ZELLMER CHRIS RUGGERI	(916) 630-8900
STAKING REQUESTS	AL JOHNSON	(925) 227-9100

LEGEND

- EX FO-TWT
- EX FO-MFS
- EX CABLE
- EX PHONE
- EX TRAFFIC
- EX TRAFFIC
- GAS (HPI) GAS
- GAS (PG&E) GAS
- EX SD
- EX SS
- EX W
- EX W(R)
- EX IRRIGATION
- EX PG&E
- EX PG&E
- 39+55±
- (42+55±)
- (LD 445.8)
- FIBER OPTIC (TIME WARNER)
- FIBER OPTIC (MFS/MCI)
- CABLE TV (COMCAST)
- TELEPHONE (AT&T)
- TRAFFIC INTERCONNECT (CITY OF SAN RAMON)
- HIGH PRESSURE GAS (KINDER MORGAN)
- GAS (PG&E)
- ELECTRIC (PG&E)
- STORM DRAIN (CITY OF SAN RAMON)
- SANITARY SEWER (COCSD)
- DOMESTIC WATER (EBMUD)
- RECLAIMED WATER (DERWA)
- IRRIGATION
- PG&E JUT (BEFORE 2010 RELOCATION)
- PG&E JUT (AFTER 2010 RELOCATION)
- PROPOSED PG&E JUT
- EXISTING BOX STATION
- PROPOSED BOX STATION
- PROPOSED BOX ELEVATION



- GENERAL NOTES:**
- GENERAL PHASE 4 CONSTRUCTION SEQUENCING SHALL BE AS FOLLOWS:
 - EBMUD RELOCATIONS PER EBMUD RELOCATION PLAN DATED 7/5 BY RJA
 - STAGE ONE AND TWO TRAFFIC SIGNAL MODIFICATION IMPROVEMENTS PER PLANS DATED 7/5 BY HEXAGON
 - STAGE ONE, TWO & THREE IMPROVEMENTS PER PLANS DATED 7/5 BY RJA (INCLUDES UTILITY CAP CONSTRUCTION, LANDSCAPE AND IRRIGATION, AND STREET LIGHT REDESIGN).
 - ALL CONSTRUCTION SEQUENCING FOR FRANCHISE UTILITIES IS REFERENCED RELATIVE TO THE ABOVE GENERAL PHASE 4 CONSTRUCTION SEQUENCING.
 - THE INTENT OF THIS PLAN IS TO PROVIDE INFORMATION ON FRANCHISE UTILITY RELOCATION WORK RELATIVE TO OTHER BOLLINGER CANYON ROAD PHASE 4 IMPROVEMENTS AND TIMING/COORDINATION OF CONSTRUCTION THEREOF. ALL FRANCHISE UTILITY DESIGN/CONSTRUCTION SHALL BE DONE BY THE RESPECTIVE UTILITY COMPANIES. FRANCHISE UTILITY COMPANIES SHALL COORDINATE ALL WORK, WORK SCHEDULES, DAILY WORK HOURS, AND TRAFFIC CONTROL WITH THE CITY OF SAN RAMON, OTHER PHASE 4 CONTRACTORS, OTHER AGENCIES (EBMUD, EBRPD, ETC) AND ONE ANOTHER AS NECESSARY.
 - THE PLAN VIEW TOPOGRAPHY SHOWN HEREON REPRESENTS THE EXISTING CONDITIONS OF BOLLINGER CANYON ROAD PRIOR TO CONSTRUCTION OF ANY PHASE 4 IMPROVEMENTS. VARIOUS STAGES OF PHASE 4 CONSTRUCTION ARE SHOWN IN THE CONSTRUCTION SEQUENCING DETAILS AS RELEVANT TO FRANCHISE UTILITY RELOCATION.
 - LOCATIONS OF EXISTING UTILITY LINES SHOWN HEREON ARE BASED ON USA MARKOUT AND SURVEY AND FRANCHISE UTILITY RECORD DRAWINGS. SEE BOLLINGER CANYON ROAD PHASE 4 POTHOLE EXHIBIT DATED 5/07/09 AND ASSOCIATED SPREADSHEET DATED 5/28/09 FOR ADDITIONAL INFORMATION. EXISTING UTILITIES IN THE GENERAL VICINITY OF RELOCATION WORK SHALL BE LOCATED IN THE FIELD PRIOR TO CONSTRUCTION ACTIVITIES.
 - WHERE RELOCATED FACILITIES INCLUDE SERVICE LINES TO ADJACENT PROPERTIES, SERVICE LINES SHALL BE RELOCATED SUCH THAT THEY ARE NOT IN CONFLICT WITH STAGE ONE RETAINING WALL FOOTINGS. 1' MINIMUM CLEARANCE (BOTTOM OF FOOTING KEY TO TOP OF CONDUIT) SHALL BE MAINTAINED. BOTTOM OF FOOTING ELEVATIONS ARE SHOWN ON THIS PLAN FOR REFERENCE.
 - UTILITY RELOCATIONS SHALL BE WITHIN EXISTING/PROPOSED PUES.
 - RELOCATED FACILITY LID ELEVATIONS ARE BASED ON CONFORMANCE TO COMPLETED PHASE 4 ROAD WIDENING IMPROVEMENTS. LIDS MAY BE ABOVE OR BELOW ADJACENT GRADES IN THE INTERIM CONDITION.
 - INTERIM GRADING AND RELOCATED BOXES SHOWN HEREON SHALL BE STAKED BY RJA. ALL STAKING REQUESTS SHALL BE MADE A MINIMUM OF TWO (2) WORKING DAYS PRIOR TO ACTUAL NEED.
 - INFORMATION ON FRANCHISE UTILITY RELOCATION/NEW CONSTRUCTION OUTSIDE OF PHASE 4 LIMITS OF WORK IS NOT INCLUDED HEREON.
 - PROTECT ALL EXISTING IRRIGATION IN PLACE. REPLACE IN KIND/REPAIR IF DAMAGED.

- CONSTRUCTION SEQUENCING LEGEND:**
- FACILITY TO BE RELOCATED PRIOR TO ANY IMPROVEMENTS PER INTERIM GRADING AS SHOWN HEREON. SEE ALSO GENERAL NOTE #6.
 - FACILITY TO BE RELOCATED IN COORDINATION WITH STAGE ONE WALL CONSTRUCTION.
 - FACILITY TO BE RELOCATED PRIOR TO STAGE TWO IMPROVEMENTS AS SHOWN HEREON.
 - FACILITY TO BE RELOCATED AFTER STAGE ONE IMPROVEMENTS AND IN COORDINATION WITH CONSTRUCTION OF STAGE TWO CURB & GUTTER. SEE ALSO GENERAL NOTE #6.
 - FIBER OPTIC VAULTS SHALL REMAIN IN PLACE AND LOWERED TO GRADE. REPLACE EXISTING VAULTS WITH HIGH STRENGTH PAVED MATERIALS WHERE NECESSARY. VAULTS SHALL BE DROPPED TO GRADE IN COORDINATION WITH STAGE TWO CONSTRUCTION. LID ELEVATIONS SHOWN CORRESPOND TO FINISHED PAVEMENT GRADES AFTER STAGE TWO IS COMPLETE. SEE IMPROVEMENT PLANS FOR ADDITIONAL INFORMATION.
 - EXISTING BOX TO REMAIN IN PLACE AND BE ADJUSTED TO GRADE WITH STAGE TWO CONSTRUCTION.
 - EXISTING FACILITY TO REMAIN IN PLACE THROUGHOUT PHASE 4 CONSTRUCTION, HOWEVER MAY REQUIRE RELOCATION/ADJUSTMENT TO GRADE WITH FUTURE CITY CENTER IMPROVEMENTS.
 - PG&E CONDUIT TO BE PLACED/LOWERED AS NECESSARY TO OBTAIN MINIMUM CLEARANCE TO STAGE ONE RETAINING WALL FOOTING (NOTE 6).
 - EXISTING FACILITY TO REMAIN. PROTECT IN PLACE.

- PLAN REFERENCE KEY NOTES:**
- SEE LANDSCAPE PLANS FOR ADDITIONAL DETAIL.
 - SEE SEPARATE SIGNAL MODIFICATION AND STREETLIGHT PLANS FOR ADDITIONAL DETAIL.
 - SEE STREETLIGHT PLANS FOR ADDITIONAL DETAIL.
 - SEE EBMUD RELOCATION PLAN FOR ADDITIONAL INFORMATION.

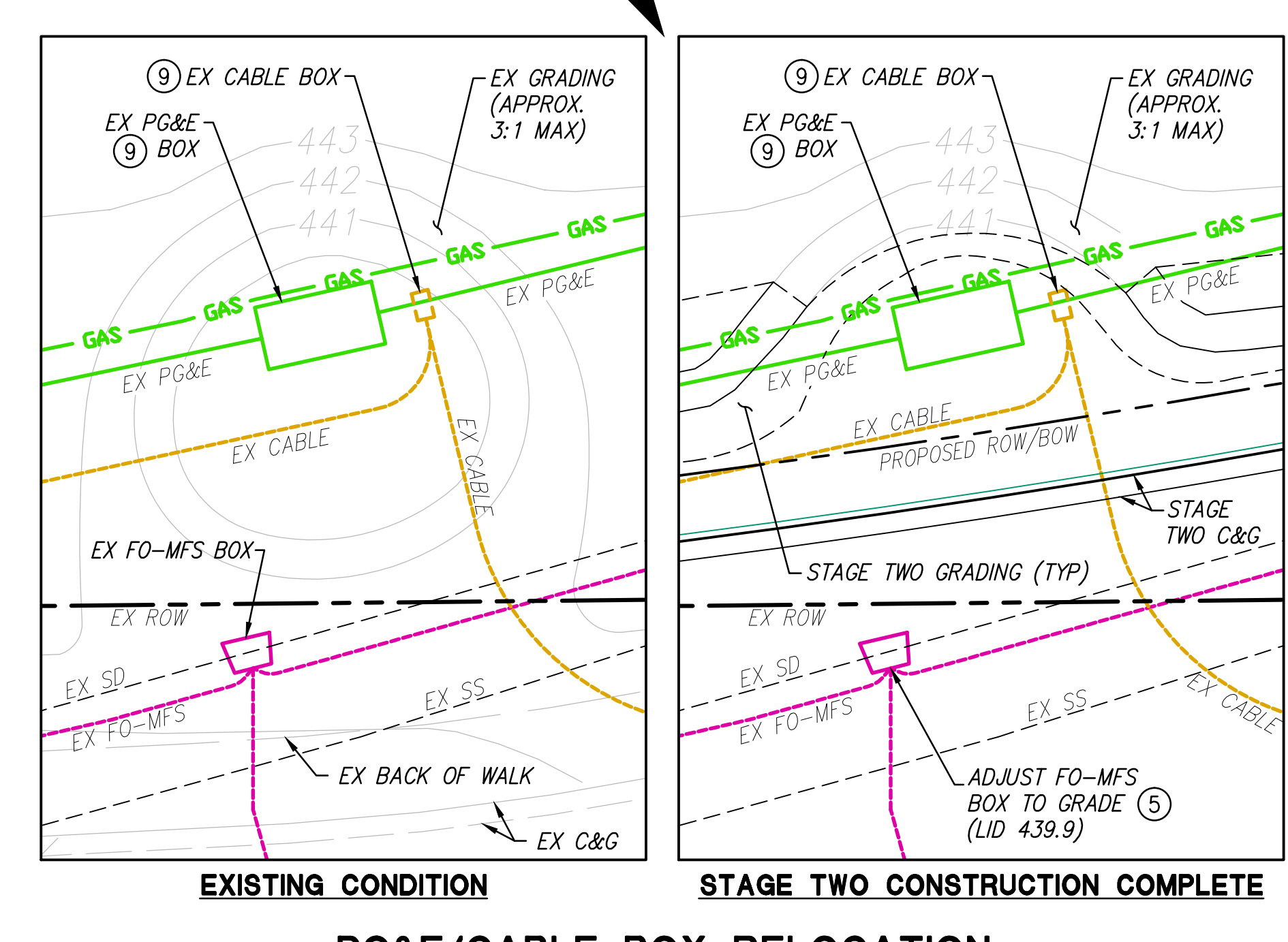
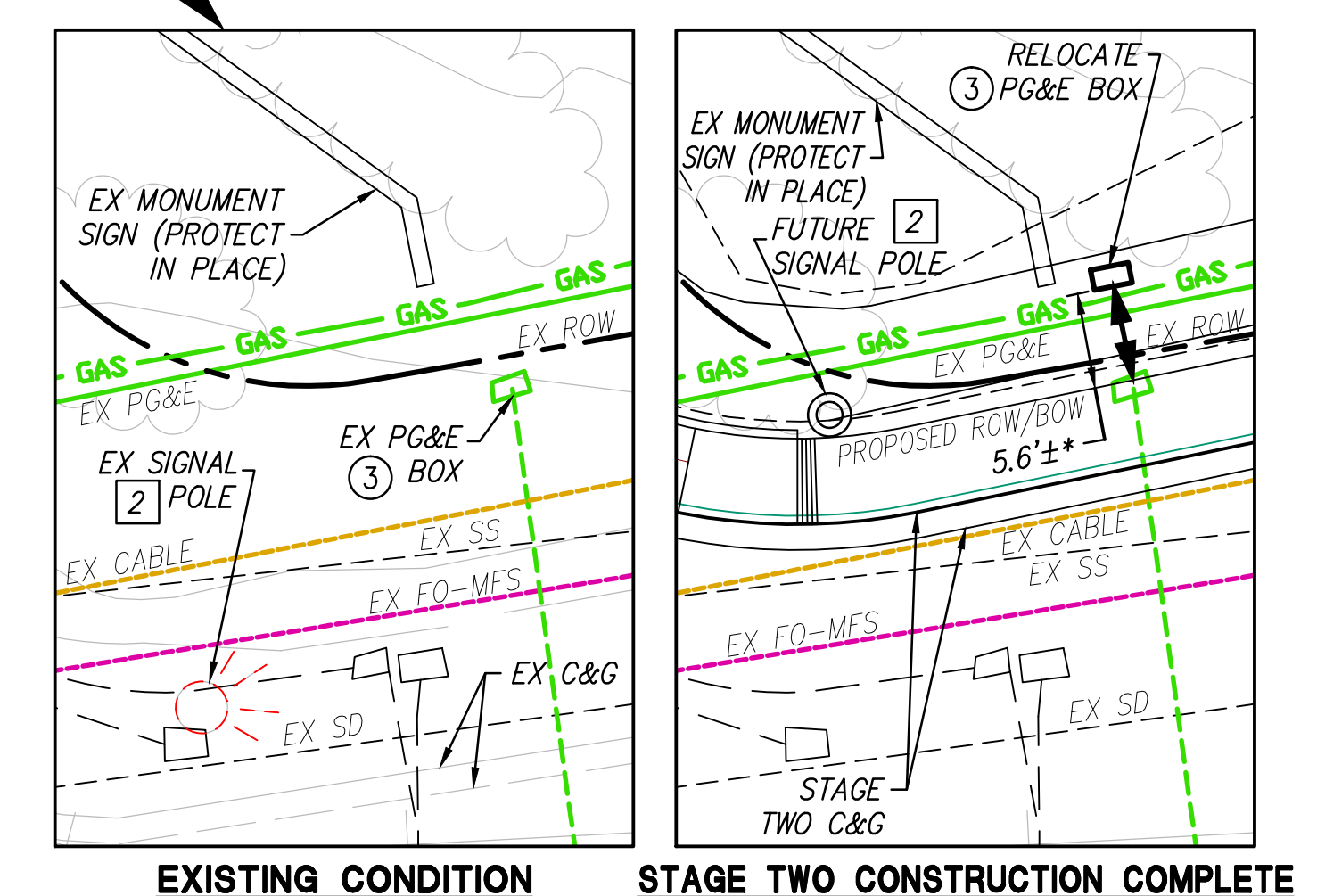
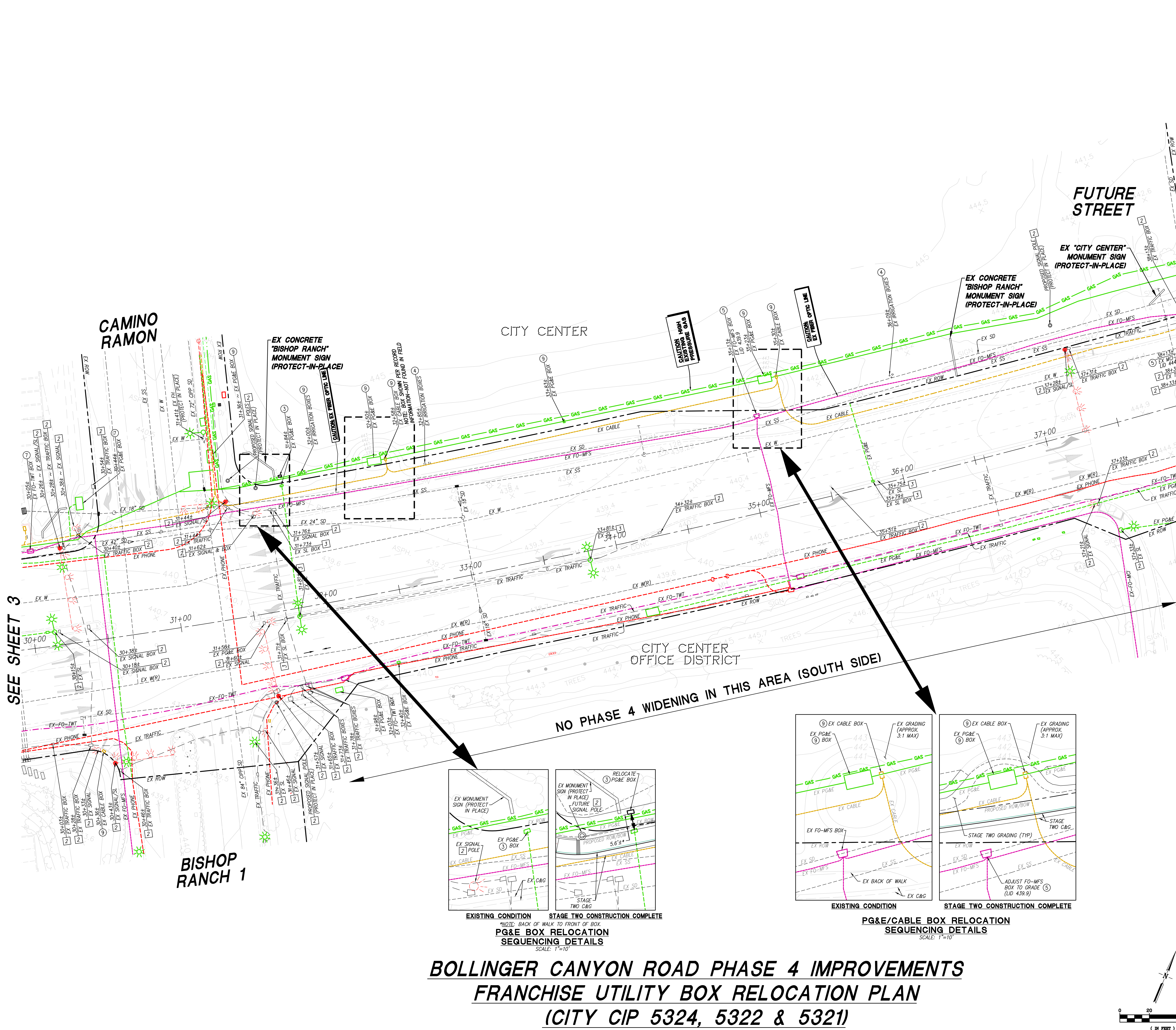
FRANCHISE UTILITY CONTACTS:

COMPANY:	CONTACT NAME:	CONTACT NUMBER:
PG&E	MATT HERRON	(925) 674-6376
COMCAST	MOHAMMED ALFAAZ	(925) 605-8181
AT&T	MENDY AGRADADOR	(925) 328-8815
MFS/MCI	REBECCA DANIELS	(925) 766-6392
TIME WARNER	ROB HADLEY	(925) 383-6326
KINDER MORGAN	GRANT MCCLELLAN	(510) 453-8961

PHASE 4 CONTACTS:

AGENCY/COMPANY:	CONTACT NAME:	CONTACT NUMBER:
CITY OF SAN RAMON	THERESA PETERSON	(925) 973-2685
EBMUD	DUSTIN LAVALLEE	(510) 287-1152
EBRPD	JIM TOWNSEND	(510) 544-2602
RUGGERI-JENSEN-AZAR	JOHN ZELMER	(916) 630-8900
	CHRIS RUGGERI	(916) 630-8900
STAKING REQUESTS	AL JOHNSON	(925) 227-9100

- LEGEND**
- EX FO-TWT
 - EX FO-MFS
 - EX CABLE
 - EX PHONE
 - EX TRAFFIC
 - EX TRAFFIC INTERCONNECT (CITY OF SAN RAMON)
 - GAS (K&U)
 - GAS (PG&E)
 - ELECTRIC (PG&E)
 - EX SD
 - EX SS
 - EX W
 - EX W(R)
 - EX IRRIGATION
 - EX PG&E
 - EX PG&E
 - FIBER OPTIC (TIME WARNER)
 - FIBER OPTIC (MFS/MCI)
 - CABLE TV (COMCAST)
 - TELEPHONE (AT&T)
 - STAGE TWO GRADING (TYP)
 - ADJUST FO-MFS BOX TO GRADE (LID 439.9)
 - PG&E JUT (BEFORE 2010 RELOCATION)
 - PG&E JUT (AFTER 2010 RELOCATION)
 - PROPOSED PG&E JUT
 - EXISTING BOX STATION
 - PROPOSED BOX STATION
 - PROPOSED BOX ELEVATION

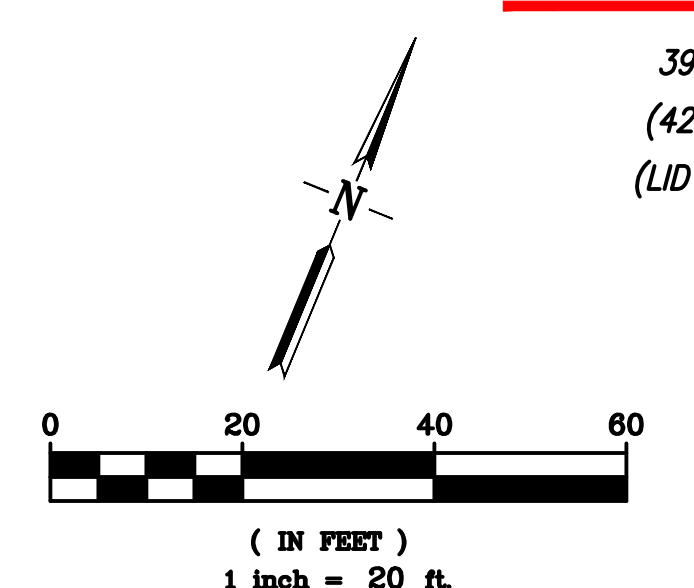


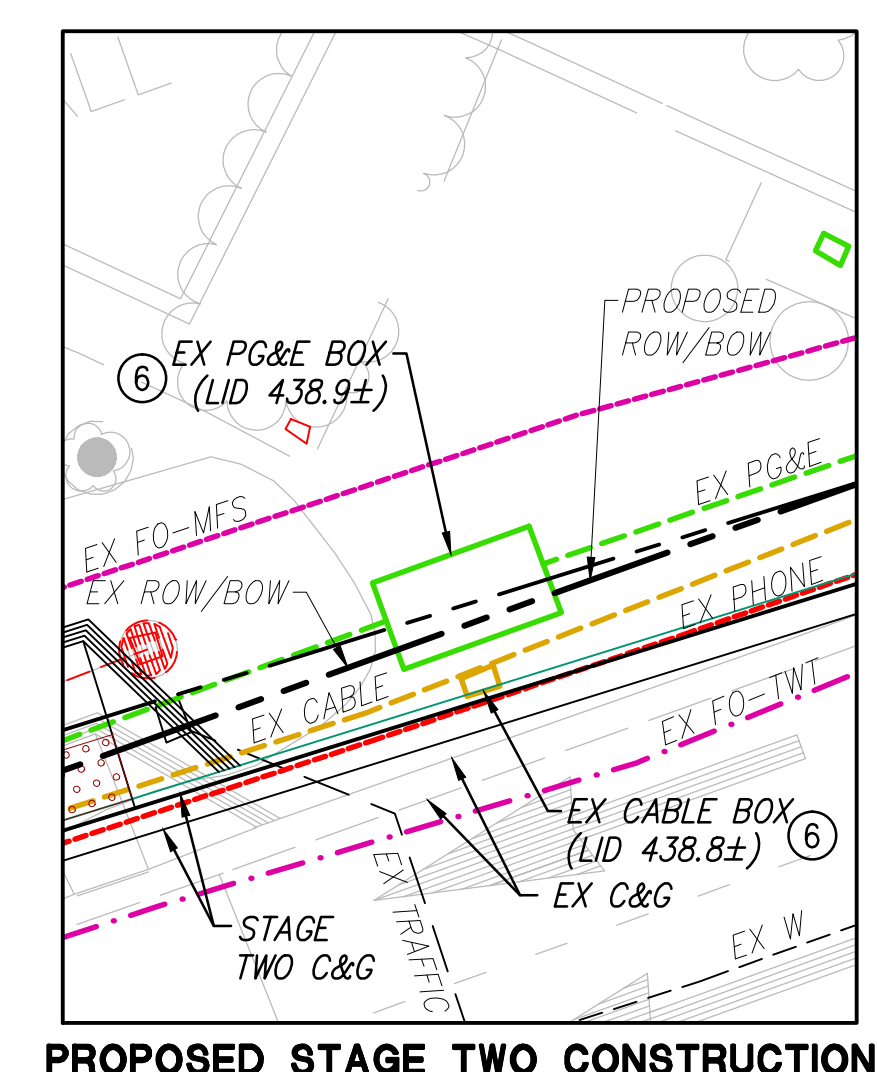
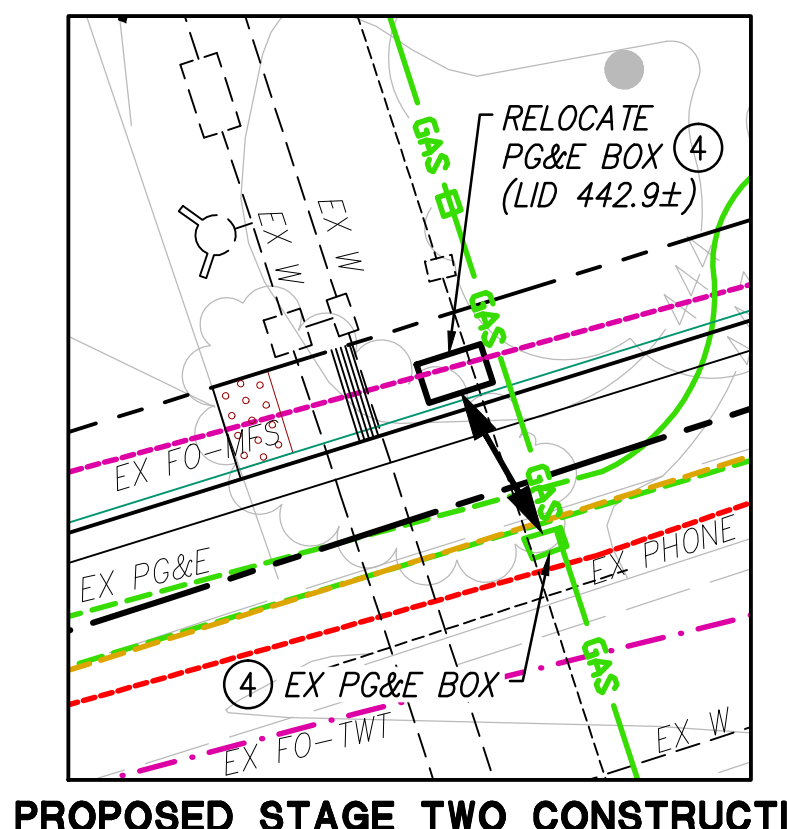
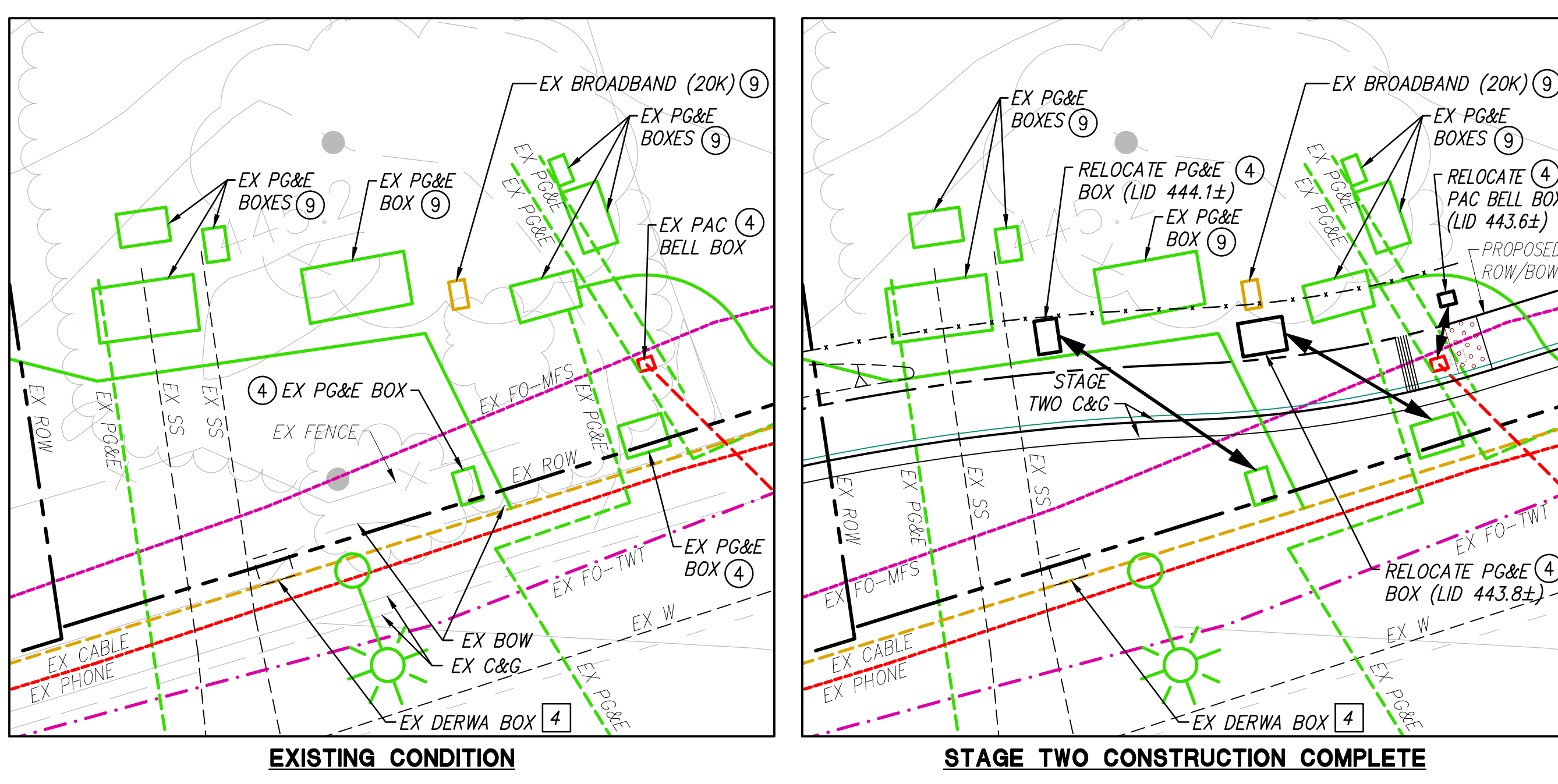
SEE SHEET 3

SEE SHEET 5

**BOLLINGER CANYON ROAD PHASE 4 IMPROVEMENTS
FRANCHISE UTILITY BOX RELOCATION PLAN
(CITY CIP 5324, 5322 & 5321)**

OCTOBER 24, 2016





- GENERAL NOTES:**
- GENERAL PHASE 4 CONSTRUCTION SEQUENCING SHALL BE AS FOLLOWS:
 - EBMUD RELOCATIONS PER EBMUD RELOCATION PLAN DATED 7/5 BY RJM
 - STAGE ONE AND TWO TRAFFIC SIGNAL MODIFICATION IMPROVEMENTS PER PLANS DATED 7/5 BY HEXAGON
 - STAGE ONE, TWO & THREE IMPROVEMENTS PER PLANS DATED 7/5 BY HEXAGON
 - LANDSCAPE AND IRRIGATION, AND STREET LIGHT REDESIGN.
 - ALL CONSTRUCTION SEQUENCING FOR FRANCHISE UTILITIES IS REFERENCED RELATIVE TO THE ABOVE GENERAL PHASE 4 CONSTRUCTION SEQUENCING.
 - THE INTENT OF THIS PLAN IS TO PROVIDE INFORMATION ON FRANCHISE UTILITY RELOCATION WORK RELATIVE TO OTHER BOLLINGER CANYON ROAD PHASE 4 IMPROVEMENTS INCLUDING TRAFFIC SIGNAL MODIFICATION OF CONSTRUCTION THEREOF. ALL FRANCHISE UTILITY DESIGN/CONSTRUCTION SHALL BE DONE BY THE RESPECTIVE UTILITY COMPANIES. FRANCHISE UTILITY COMPANIES SHALL COORDINATE ALL WORK, WORK SCHEDULES, DAILY WORK HOURS, AND TRAFFIC CONTROL WITH THE CITY OF SAN RAMON, OTHER PHASE 4 CONTRACTORS, OTHER AGENCIES (EBMUD, EBRPD, ETC.) AND ONE ANOTHER AS NECESSARY.
 - THE PLAN VIEW TOPOGRAPHY SHOWN HEREON REPRESENTS THE EXISTING CONDITIONS OF BOLLINGER CANYON ROAD PRIOR TO CONSTRUCTION OF ANY PHASE 4 IMPROVEMENTS. VARIOUS STAGES OF PHASE 4 CONSTRUCTION ARE SHOWN IN THE CONSTRUCTION SEQUENCING DETAILS AS APPLICABLE TO FRANCHISE UTILITY RELOCATION.
 - LOCATIONS OF EXISTING UTILITY LINES SHOWN HEREON ARE BASED ON USA MARKOUT AND SURVEY AND EXISTING UTILITY RECORD DRAWINGS. SEE BOLLINGER CANYON ROAD PHASE 4 POI HOLE EXHIBIT DATED 5/07/09 AND ASSOCIATED SPREADSHEET DATED 5/28/09 FOR ADDITIONAL INFORMATION. EXISTING UTILITIES IN THE GENERAL VICINITY OF RELOCATION WORK SHALL BE LOCATED IN THE FIELD PRIOR TO CONSTRUCTION ACTIVITIES.
 - WHERE RELOCATED FACILITIES INCLUDE SERVICE LINES TO ADJACENT PROPERTIES, SERVICE LINES SHALL BE RELOCATED SUCH THAT THEY ARE NOT IN CONFLICT WITH STAGE ONE RETAINING WALL FOOTINGS. 1' MINIMUM CLEARANCE (BOTTOM OF FOOTING KEY TO TOP OF CONDUIT) SHALL BE MAINTAINED. BOTTOM OF FOOTING ELEVATIONS ARE SHOWN ON THIS PLAN FOR REFERENCE.
 - UTILITY RELOCATIONS SHALL BE WITHIN EXISTING/PROPOSED PUES.
 - RELOCATED FACILITY LD ELEVATIONS ARE BASED ON CONFORMANCE TO COMPLETED PHASE 4 ROAD WIDENING IMPROVEMENTS. LIDS MAY BE ABOVE OR BELOW ADJACENT GRADES IN THE INTERIM CONDITION.
 - INTERIM GRADING AND RELOCATED BOXES SHOWN HEREON SHALL BE STAKED BY RJM. ALL STAKING REQUESTS SHALL BE MADE A MINIMUM OF TWO (2) WORKING DAYS PRIOR TO ACTUAL NEED.
 - INFORMATION ON FRANCHISE UTILITY RELOCATION/NEW CONSTRUCTION OUTSIDE OF PHASE 4 LIMITS OF WORK IS NOT INCLUDED HEREON.
 - PROTECT ALL EXISTING IRRIGATION IN PLACE. REPLACE IN KIND/REPAIR IF DAMAGED.

- CONSTRUCTION SEQUENCING LEGEND:**
- FACILITY TO BE RELOCATED PRIOR TO ANY IMPROVEMENTS PER INTERIM GRADING AS SHOWN HEREON. SEE ALSO GENERAL NOTE #6.
 - FACILITY TO BE RELOCATED IN COORDINATION WITH STAGE ONE WALL CONSTRUCTION.
 - FACILITY TO BE RELOCATED PRIOR TO STAGE TWO IMPROVEMENTS AS SHOWN HEREON.
 - FACILITY TO BE RELOCATED AFTER STAGE ONE IMPROVEMENTS AND IN COORDINATION WITH CONSTRUCTION OF STAGE TWO CURB & GUTTER. SEE ALSO GENERAL NOTE #6.
 - FIBER OPTIC VAULTS SHALL REMAIN IN PLACE AND LOWERED TO GRADE. REPLACE EXISTING H2O TRAFFIC RATED MATERIALS WHERE NECESSARY. VAULTS SHALL BE DROPPED TO GRADE IN COORDINATION WITH STAGE TWO CONSTRUCTION. LD ELEVATIONS SHOWN CORRESPOND TO FINISHED PAVEMENT GRADES AFTER STAGE TWO IS COMPLETE. SEE IMPROVEMENT PLANS FOR ADDITIONAL INFORMATION.
 - EXISTING BOX TO REMAIN IN PLACE AND BE ADJUSTED TO GRADE WITH STAGE TWO CONSTRUCTION.
 - EXISTING FACILITY TO REMAIN IN PLACE THROUGHOUT PHASE 4 CONSTRUCTION, HOWEVER MAY REQUIRE RELOCATION/ADJUSTMENT TO GRADE WITH FUTURE CITY CENTER IMPROVEMENTS.
 - PG&E CONDUIT TO BE PLACED/LOWERED AS NECESSARY TO OBTAIN MINIMUM CLEARANCE TO STAGE ONE RETAINING WALL FOOTING (SEE NOTE 6).
 - EXISTING FACILITY TO REMAIN. PROTECT IN PLACE.

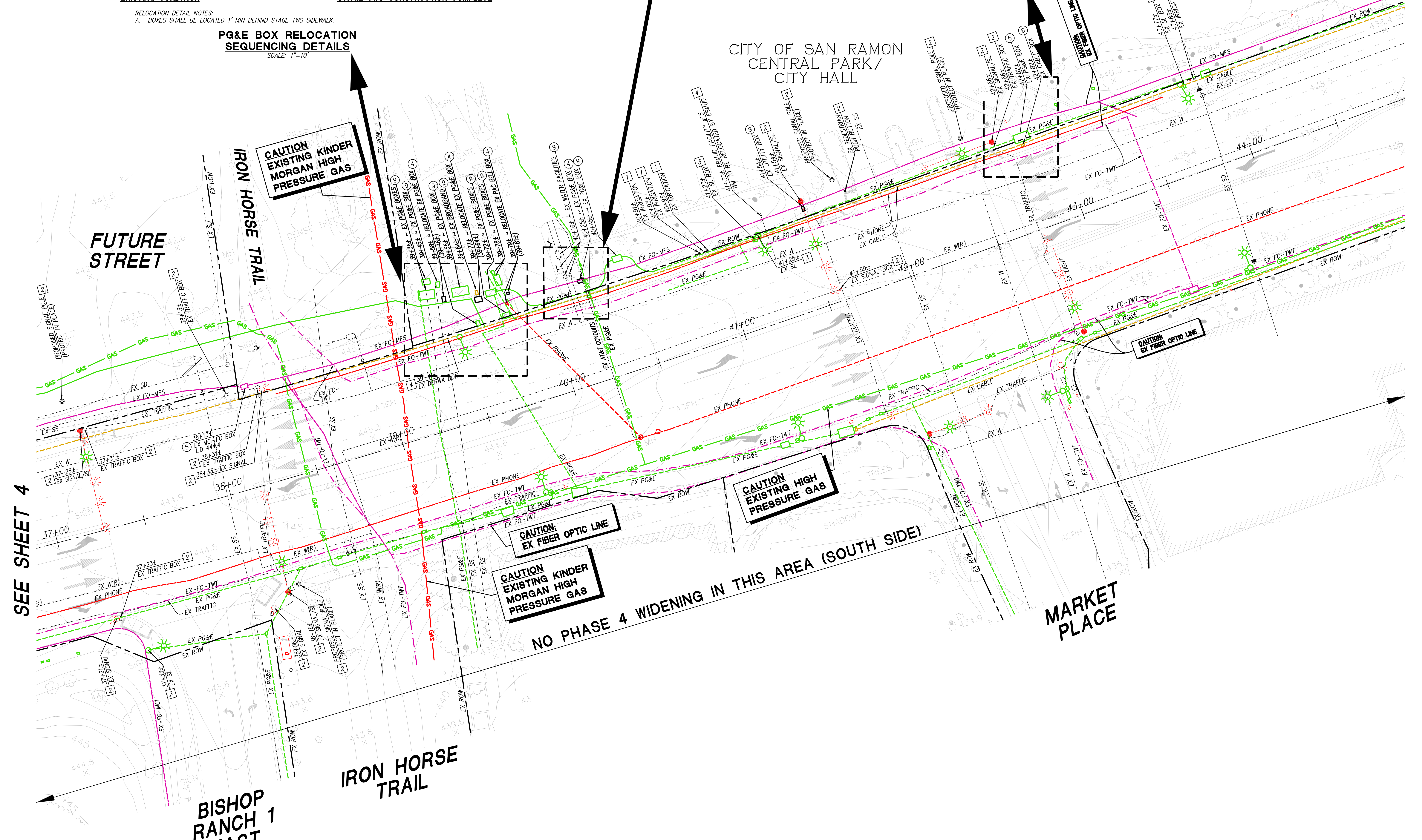
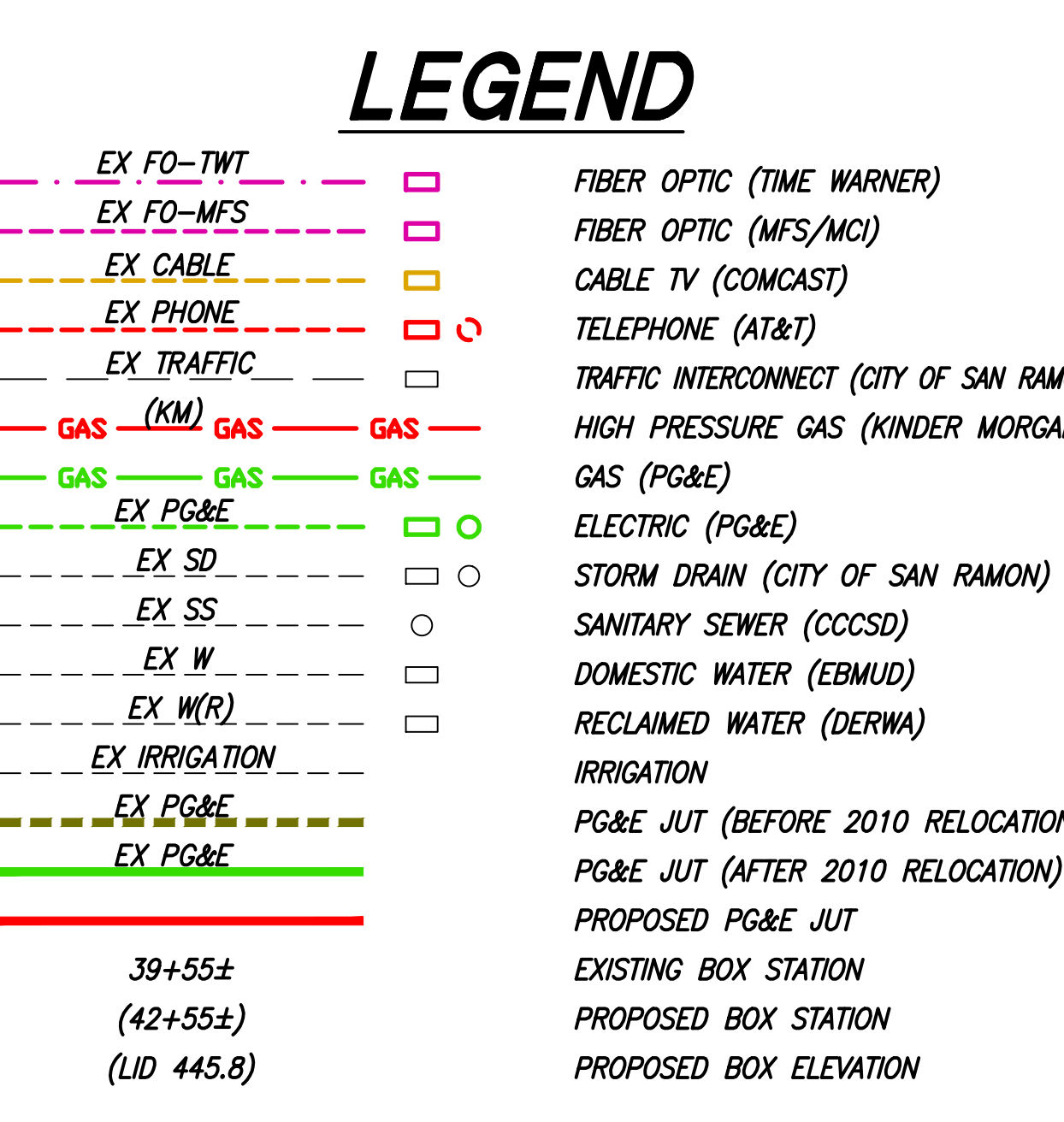
- PLAN REFERENCE KEY NOTES:**
- SEE LANDSCAPE PLANS FOR ADDITIONAL DETAIL.
 - SEE SEPARATE SIGNAL MODIFICATION AND STREETLIGHT PLANS FOR ADDITIONAL DETAIL.
 - SEE STREETLIGHT PLANS FOR ADDITIONAL DETAIL.
 - SEE EBMUD RELOCATION PLAN FOR ADDITIONAL INFORMATION.

FRANCHISE UTILITY CONTACTS:

COMPANY:	CONTACT NAME:	CONTACT NUMBER:
PG&E	MATT HERRON	(925) 674-6376
COMCAST	MOHAMMED ALFAAZ	(925) 605-8181
AT&T	WENDY AGRAVADOR	(925) 328-6815
MFS/MCI	REBECCA DANIELS	(925) 766-6392
TIME WARNER	ROB HADLEY	(925) 383-6326
KINDER MORGAN	GRANT MCCLELLAN	(510) 453-8961

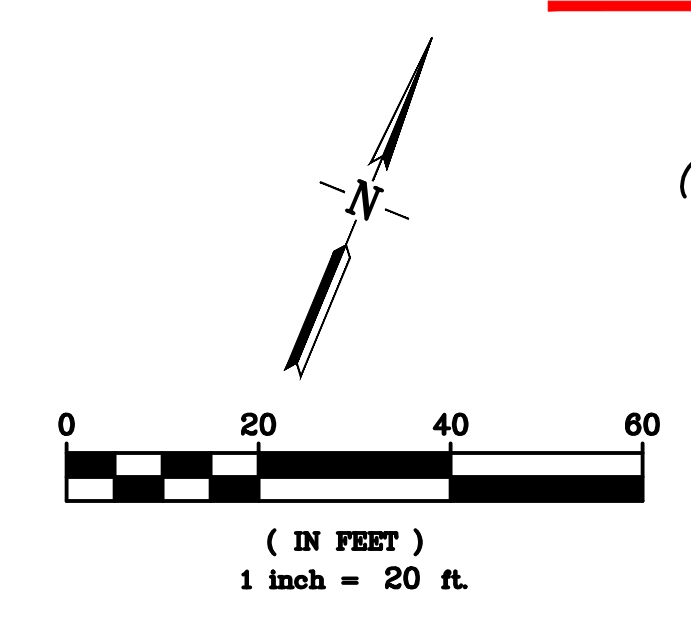
PHASE 4 CONTACTS:

AGENCY/COMPANY:	CONTACT NAME:	CONTACT NUMBER:
CITY OF SAN RAMON	THERESA PETERSON	(925) 973-2685
EBMUD	DUSTIN LAVALLEE	(510) 287-1152
EBRPD	JIM TOWNSEND	(510) 544-2602
RUGGERI-JENSEN-AZAR	JOHN ZELLMER	(916) 630-8900
	CHRIS RUGGERI	(916) 630-8900
STAKING REQUESTS	AL JOHNSON	(925) 227-9100



**BOLLINGER CANYON ROAD PHASE 4 IMPROVEMENTS
FRANCHISE UTILITY BOX RELOCATION PLAN
(CITY CIP 5324, 5322 & 5321)**

OCTOBER 24, 2016



RJA
RUGGERI-JENSEN-AZAR
ENGINEERS • PLANNERS • SURVEYORS
2541 WARREN DRIVE, SUITE 100, ROCKLIN, CA 95677
PHONE: (916) 630-8900 FAX: (916) 630-8909
SHEET 5 OF 5