

Overview

The Shared Mobility Hubs (SMH) project is one of six ground-breaking projects that make up the Contra Costa Transportation Authority's (CCTA) INNOVATE 680 program. This program seeks to implement a carefully curated suite of projects that, when operating together, will address corridor-wide congestion, travel delays, and long-standing operational challenges along Interstate 680 (I-680).



The SMH project will include the planning and development of shared mobility hub stations at existing park and ride lots along I-680 from Bollinger Canyon road to SR-4. Shared mobility hubs are places of connectivity where different travel options – biking, transit, carpooling, vanpooling, ride-sourcing, and micro transit-come together. In addition to providing an integrated suite of mobility services, the hubs may offer a variety of amenities such as food trucks, package delivery, enhanced waiting areas, device charging, and wi-fi.

User Experience

Below is an illustrated flow diagram showing a user experience scenario, starting with a traveler who checks a mobility-on-demand app at the start of the journey to make the best commute choices. The Shared Mobility Hub is a key element in this journey, connecting the traveler to bike parking, a bus and BART.



Commuter opens Mobility on Demand phone app, chooses to travel by bike, then bus, then BART.



At Shared Mobility Hub, bike is stored safely and commuter boards bus.



Timed lights on city streets provide smooth ride to on-ramp, where bus takes HOV lane to quickly enter freeway.



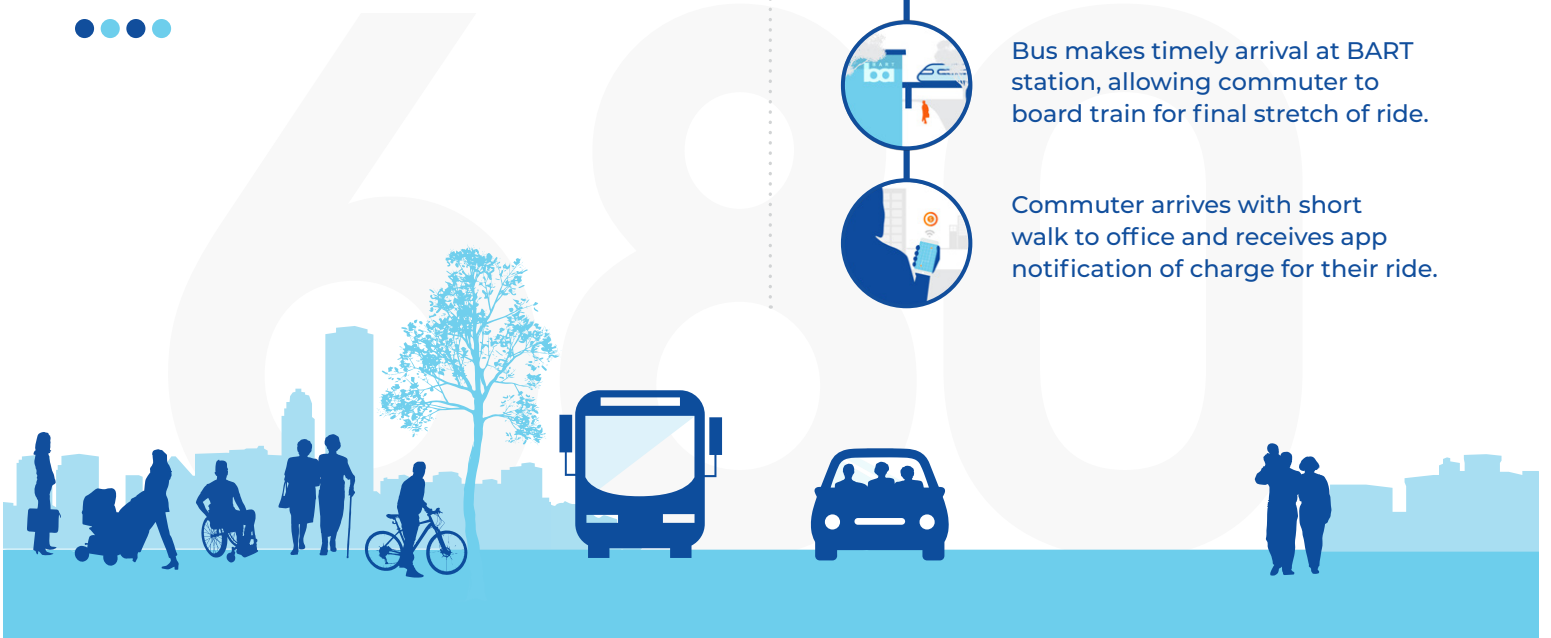
Congestion on I-680 prompts bus to use Part-Time Transit Lane located on shoulder, bypassing traffic.



Bus makes timely arrival at BART station, allowing commuter to board train for final stretch of ride.



Commuter arrives with short walk to office and receives app notification of charge for their ride.





Goals



SEAMLESS, SAFE TRAVEL

Offering a variety of modes in a convenient, one-stop location that is clean and safe



ENHANCED ACCESS

Variety of modes offered will accommodate a diverse range of accessibility needs



REGIONAL CONNECTIONS

Transitioning between local and regional transportation systems has never been easier



INTEGRATED TECHNOLOGY

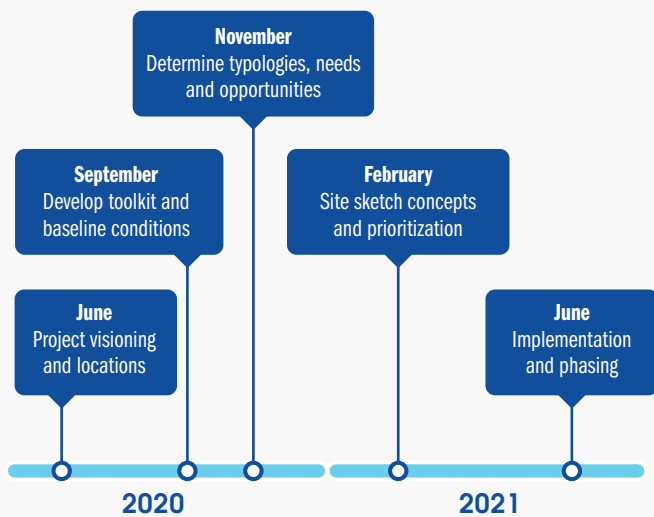
Real time transit information will help optimize trip planning for more reliable travel

Potential Mobility Hub Locations



- 5** BART Stations
- 3** Transit Centers
- 6** Arrive & Ride Centers (existing)

Key Milestones



For more information about this project contact:

Peter Engel, *Director of Programs*
 Stephanie Hu, *Acting Director of Projects*
 Contra Costa Transportation Authority
 Pengel@ccta.net
 StephanieH@ccta.net



Stay Informed!

ccta.net/INNOVATE680/smh

