

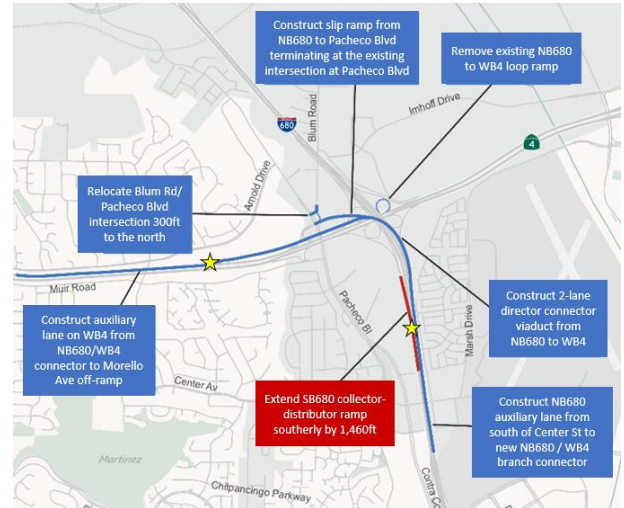
## PROJECT DESCRIPTION

The State Route 4 (SR-4) corridor serves as the only major east-west transportation link joining the communities of Antioch, Bay Point, Pittsburg and Brentwood with central Contra Costa County and the Bay Area. The Interstate 680 (I-680) corridor serves as the main artery through central Contra Costa County, connecting it with Solano County to the north and Alameda and Santa Clara counties to the south.

The I-680 and SR-4 Highway Corridors are key connectors to Bay Area Global Gateways and freight transportation systems including major maritime facilities at the Port of Oakland, as well as the minor Ports of Richmond, Benicia, San Francisco, and Redwood City, and the Bay Area’s international airports which handle international as well as domestic air cargo.

A significant bottleneck for Contra Costa, the I-680/SR-4 Interchange will be reconfigured to improve safety, reduce congestion, and improve traffic operations on these critical corridors. Mega Program funding will be put towards the construction phase of the project. It is anticipated the project will be shovel ready in late 2024.

- ▶ **Phase 1** will construct a two-lane flyover direct connector from NB I-680 to WB SR-4 with ramp metering, remove the existing NB I-680 to WB SR-4 loop ramp, construct auxiliary lanes on WB SR-4 as well as NB I-680, and add a slip ramp from NB I-680 to Pacheco Blvd.
- ▶ **Phase 2A** will extend the SB I-680 collector-distributor ramp and install a ramp metering facility.



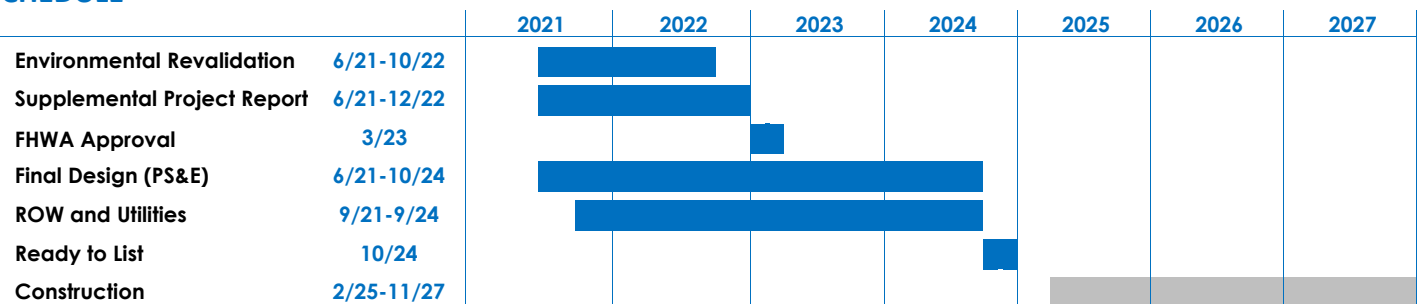
### Legend

- Phase 1
- Phase 2A
- ★ Proposed Ramp Metering

▶ **TOTAL COST: \$339.0M**

▶ **TOTAL ASK: \$113.4M**

## SCHEDULE



## COST/FUNDING

| Delivery Phase           | Cost                 | Mega Request         | Regional Measure 3   | TCEP                |
|--------------------------|----------------------|----------------------|----------------------|---------------------|
| Environmental            | --                   | --                   | --                   |                     |
| PS&E (Design)            | \$23,500,000         | --                   | \$8,000,000          | \$15,500,000        |
| Right-of-Way / Utilities | \$20,100,000         | --                   | \$20,100,000         |                     |
| Construction             | \$295,300,000        | \$113,400,000        | \$181,900,000        |                     |
| <b>Total</b>             | <b>\$338,900,000</b> | <b>\$113,400,000</b> | <b>\$210,000,000</b> | <b>\$15,500,000</b> |