

# LEGEND OF MOBILITY HUB ICONS

## 1 | Transit Amenities



## 2 | Bike Amenities



## 3 | Pedestrian Amenities



## 4 | Motorized Services & Amenities



## 5 | Support Services & Amenities



TRANSIT SIGNAL PRIORITY



BIKE WAYS



PEDESTRIAN WALKWAYS



ELECTRIC VEHICLE CHARGING STATION



LIGHTING



SOLAR POWER CANOPY



ENHANCED TRANSIT WAITING AREAS



ELECTRIC BIKE CHARGING STATIONS



PEDESTRIAN CROSSINGS



RIDE SHARE



MONUMENT/ PLACEMAKER



MOBILE RETAIL SERVICES



BATTERY ELECTRIC BUS (BEB) CHARGING STATION



BICYCLE PARKING/ STORAGE



PUBLIC SPACE/ PLAZA



DROP OFF/ PICK UP



REAL-TIME TRAVEL INFORMATION



FARE VENDING MACHINES



SHARED MOBILITY



TRANSPORTATION NETWORK COMPANY (TNC)



WIFI AMENITIES



CURB EXTENSIONS (BULB-OUTS)



BICYCLE REPAIR STATION



PARKING RESERVATION



PARKING INFORMATION



MICROTRANSIT/ AUTONOMOUS TRANSIT



CARPOOL/ VANPOOL PARKING



WAYFINDING



DRIVER RELIEF FACILITY/ LAYOVER



ADA PARKING



CCTV

NO	REVISION / SUBMISSION	DATE	DESIGNED BY	DATE
			DRAWN BY	
			CHECKED BY	
			IN CHARGE	

NOT FOR CONSTRUCTION

SCALE  
HORIZONTAL  
N/A  
VERTICAL  
N/A

**Kimley»Horn**

1300 CLAY STREET, STE 325  
OAKLAND, CA 94612  
(510) 625-0712



**INNOVATE 680 PROJECT**






SHARED MOBILITY HUBS SYMBOLOGY

DRAWING NO.
SHEET NO.

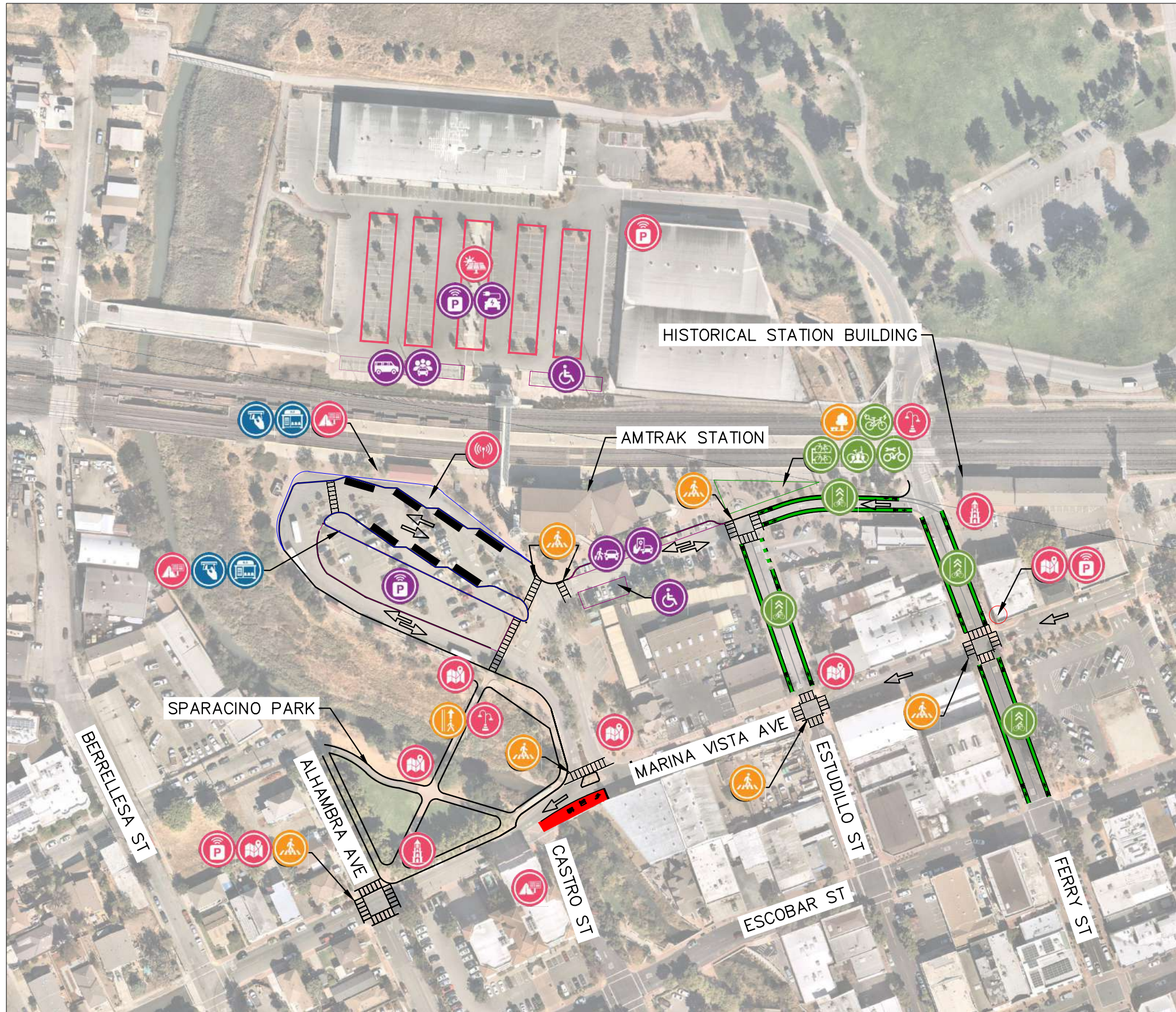
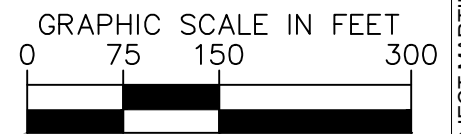
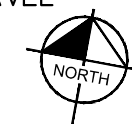
# ADDITIONAL IMPROVEMENTS IN MOBILITY HUB AREA

- ENHANCE BIKE FACILITIES ON MARINA VISTA AVENUE/ESCOBAR EAST OF DOWNTOWN AND ALHAMBRA AVENUE/BERRELLESA STREET AND COURT STREET/PINE STREET TO THE SOUTH.
- ENHANCE WAYFINDING AND PEDESTRIAN ROUTES TO MAJOR EMPLOYERS AT THE CONTRA COSTA COUNTY SUPERIOR COURT AND COUNTY GOVERNMENT OFFICE COMPLEX AROUND COURT STREET. PROVIDE REAL-TIME TRANSIT INFORMATION AT MAJOR EMPLOYMENT SITES.
- IMPROVE BICYCLE WAY FINDING TO MAJOR DESTINATIONS SOUTH OF DOWNTOWN SUCH AS THE CONTRA COST REGIONAL MEDICAL CENTER, ALHAMBRA HIGH SCHOOL, VETERANS AFFAIRS (VA) MARTINEZ, AND OTHER COMMERCIAL CENTERS ALONG SR-4. PROVIDE SECURE BIKE PARKING, SHARED MICROMOBILITY SERVICES, AND BIKE CHARGING INFRASTRUCTURE AT THESE LOCATIONS.
- EXPAND THE BICYCLE NETWORK TO RESIDENTIAL AREAS IN THE BIKESHED.
- MINIMIZE THE TRANSIT TRAVEL TIME TO ACCESS THE SITE BY INCORPORATING TRANSIT SIGNAL PRIORITY (TSP) AT TRAFFIC SIGNALS ALONG THE PRIMARY TRANSIT ROUTES CONNECTING TO REGIONAL HIGHWAYS, INCLUDING MARINA VISTA AVENUE/ESCOBAR STREET TO CONNECT TO I-680 AND ALHAMBRA AVENUE/BERRELLESA STREET TO CONNECT TO SR-4.

## LEGEND

-  TRANSIT AMENITIES
-  BICYCLE AMENITIES
-  PEDESTRIAN AMENITIES
-  MOTORIZED SERVICES & AMENITIES
-  SUPPORT SERVICES & AMENITIES

 DIRECTION OF TRAVEL



NO	REVISION / SUBMISSION	DATE	DESIGNED BY	DATE

NOT FOR CONSTRUCTION

SCALE  
HORIZONTAL  
1" = 150'  
VERTICAL  
N/A



1300 CLAY STREET, STE 325  
OAKLAND, CA 94612  
(510) 625-0712



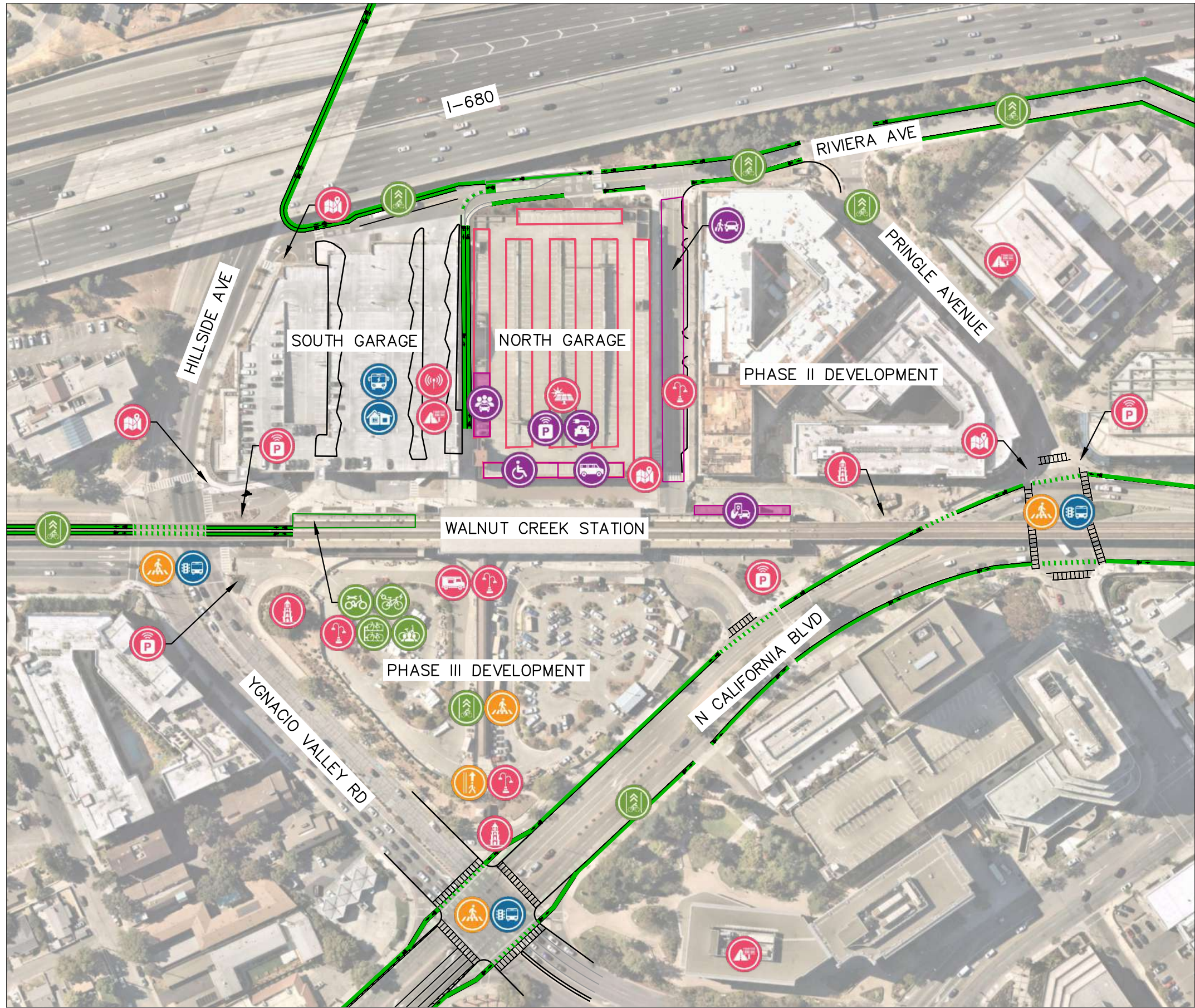
INNOVATE 680 PROJECT

MARTINEZ AMTRAK REGIONAL MOBILITY HUB

601 MARINA VISTA AVE, MARTINEZ, CA 94553

**DRAFT  
CONCEPTUAL LAYOUT**

DRAWING NO.
SHEET NO.

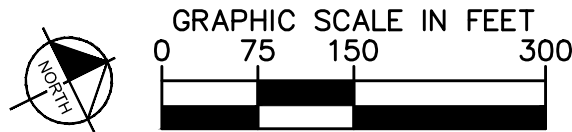


## ADDITIONAL IMPROVEMENTS IN MOBILITY HUB AREA

- IMPROVE BIKE CONNECTIVITY ALONG RIVIERA AVENUE AND PARKSIDE DRIVE TO CONNECT TO IRON HORSE REGIONAL TRAIL. PROVIDE INTERSECTION ENHANCEMENTS AT RIVIERA AVENUE/PARKSIDE DRIVE.
- ENHANCE WAYFINDING TO CYCLE TRACK AND SIDEWALK ALONG OAKLAND BOULEVARD, WHICH PROVIDES A CONNECTION TO DOWNTOWN.
- IMPROVE BICYCLE FACILITIES ALONG CALIFORNIA BOULEVARD TO CONNECT TO DOWNTOWN.
- PROVIDE REAL-TIME TRANSIT INFORMATION AT MAJOR COMMERCIAL, MEDICAL AND EMPLOYMENT DESTINATIONS IN AND AROUND DOWNTOWN.
- PROVIDE A BICYCLE CONNECTION ALONG HILLSIDE AVENUE ACROSS I-680 TO PARKSIDE DRIVE.
- PROVIDE TRANSIT SIGNAL PRIORITY ON YGNACIO VALLEY ROAD AND CALIFORNIA BOULEVARD/N MAIN STREET.
- PROVIDE SECURE BIKE PARKING, SHARED MICROMOBILITY SERVICES, AND BIKE CHARGING INFRASTRUCTURE AT KEY EMPLOYMENT AND COMMERCIAL DESTINATIONS IN DOWNTOWN.

## LEGEND

- TRANSIT AMENITIES
- BICYCLE AMENITIES
- PEDESTRIAN AMENITIES
- MOTORIZED SERVICES & AMENITIES
- SUPPORT SERVICES & AMENITIES



NO	REVISION / SUBMISSION	DATE	DESIGNED BY	DATE
			DRAWN BY	
			CHECKED BY	
			IN CHARGE	

NOT FOR CONSTRUCTION

SCALE  
HORIZONTAL  
1" = 150'  
VERTICAL  
N/A



1300 CLAY STREET, STE 325  
OAKLAND, CA 94612  
(510) 625-0712



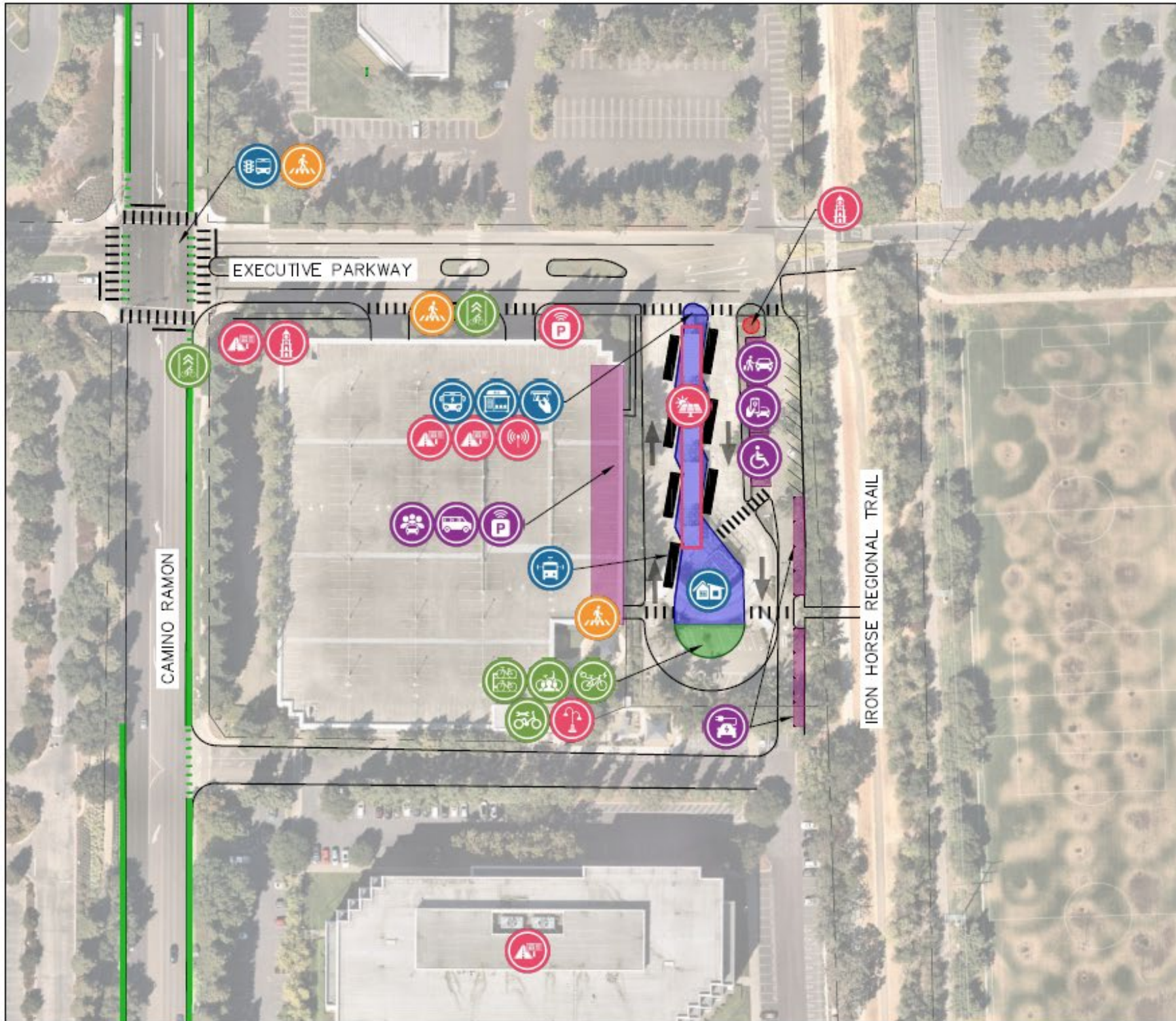
### INNOVATE 680 PROJECT

WALNUT CREEK BART  
REGIONAL MOBILITY HUB  
200 YGNACIO VALLEY RD, WALNUT CREEK, CA 94596

DRAFT  
CONCEPTUAL LAYOUT

DRAWING NO.
SHEET NO.







Bollinger Canyon Road Mobility Hub



**ADDITIONAL IMPROVEMENTS IN MOBILITY HUB AREA**

- PROVIDE SAFE AND COMFORTABLE DEDICATED BICYCLE FACILITIES AMONG CAMINO RAMON, EXECUTIVE PARKWAY, NORRIS CANYON ROAD, AND BISHOP DRIVE.
- PROVIDE TRANSIT PRIORITY TREATMENTS ALONG BUS ROUTES WITHIN BISHOP RANCH.
- ADDRESS CONGESTION ISSUES AT THE TRANSIT CENTER ASSOCIATED WITH PICK-UP/DROP-OFF ACTIVITIES AT IRON HORSE MIDDLE SCHOOL.
- PROVIDE A PUBLICLY-ACCESSIBLE PEDESTRIAN AND BICYCLE PATH OF TRAVEL FROM THE MOBILITY HUB TO ALCOSTA BOULEVARD NORTH OF THE MIDDLE SCHOOL.
- INCORPORATE THE PROPOSED MOBILITY HUB IMPROVEMENTS WITH OTHER PLANNED MOBILITY HUBS WITHIN BISHOP RANCH TO CREATE A COHESIVE NETWORK.
- PROVIDE A FREQUENT SHUTTLE CONNECTION TO CITY CENTER AND OTHER ATTRACTORS WITHIN BISHOP RANCH.

**LEGEND**

-  TRANSIT AMENITIES
-  BICYCLE AMENITIES
-  PEDESTRIAN AMENITIES
-  MOTORIZED SERVICES & AMENITIES
-  SUPPORT SERVICES & AMENITIES
-  DIRECTION OF TRAVEL

