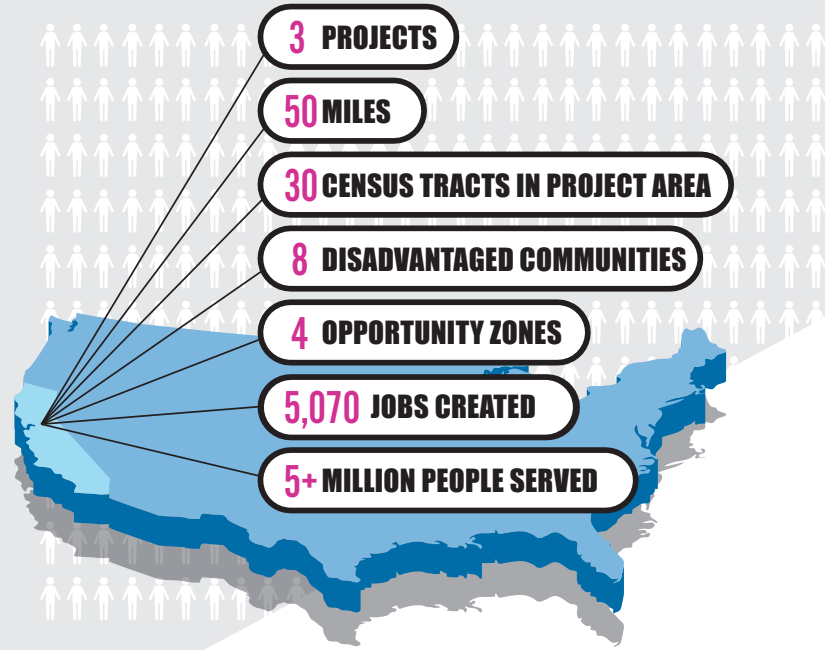
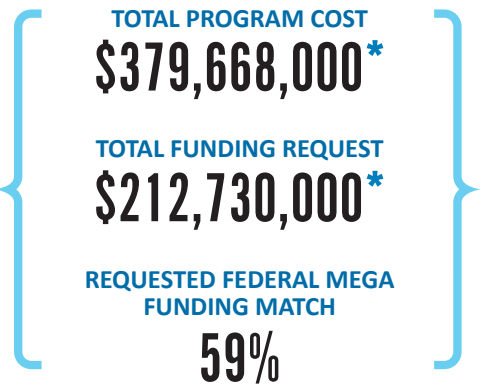
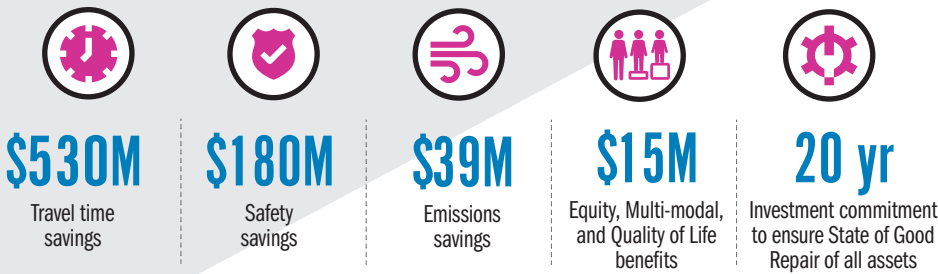


WHY INVEST IN INNOVATE 680?

Transportation challenges of the Interstate 680 corridor in Contra Costa County cannot be addressed by a one-size-fits-all solution. The Innovate 680 Program includes cutting-edge technologies in **coordinated adaptive ramp metering; shared mobility hubs that complement zero emission transit; and completion of express lanes.** These elements are designed to work together to enhance travel along Interstate 680, a critical corridor for the region.



Innovate 680 will benefit society.



Innovate 680 meets the USDOT grant criteria.

	Increases Safety	Facilitates a state of good repair	Generates positive economic impacts	Supports climate resiliency and the environment	Improves equity, multimodal options, and quality of life	Delivers Innovative solutions
Shared Mobility Hubs	✓	✓	✓	✓	✓	✓
Express Lane Completion	✓	✓	✓	✓	✓	✓
Coordinated Adaptive Ramp Metering	✓	✓	✓	✓	✓	✓

✓ Meets Project Outcome Criteria ✓ Exceeds Project Outcome Criteria

*Dollar amounts are approximate. Please refer to the application and corresponding BCA memorandum for exact amounts in discounted 2022 dollars.